

Pickup Truck with Trailer Collision with Motorcycles, Randolph, New Hampshire, June 21, 2019

Rob Molloy, PhD.

Director, Office of Highway Safety

National Transportation Safety Board

Overview

- Crash description
- Pickup driver performance
- Pickup driver history
- Motorcycle rider performance

**100
YEARS**

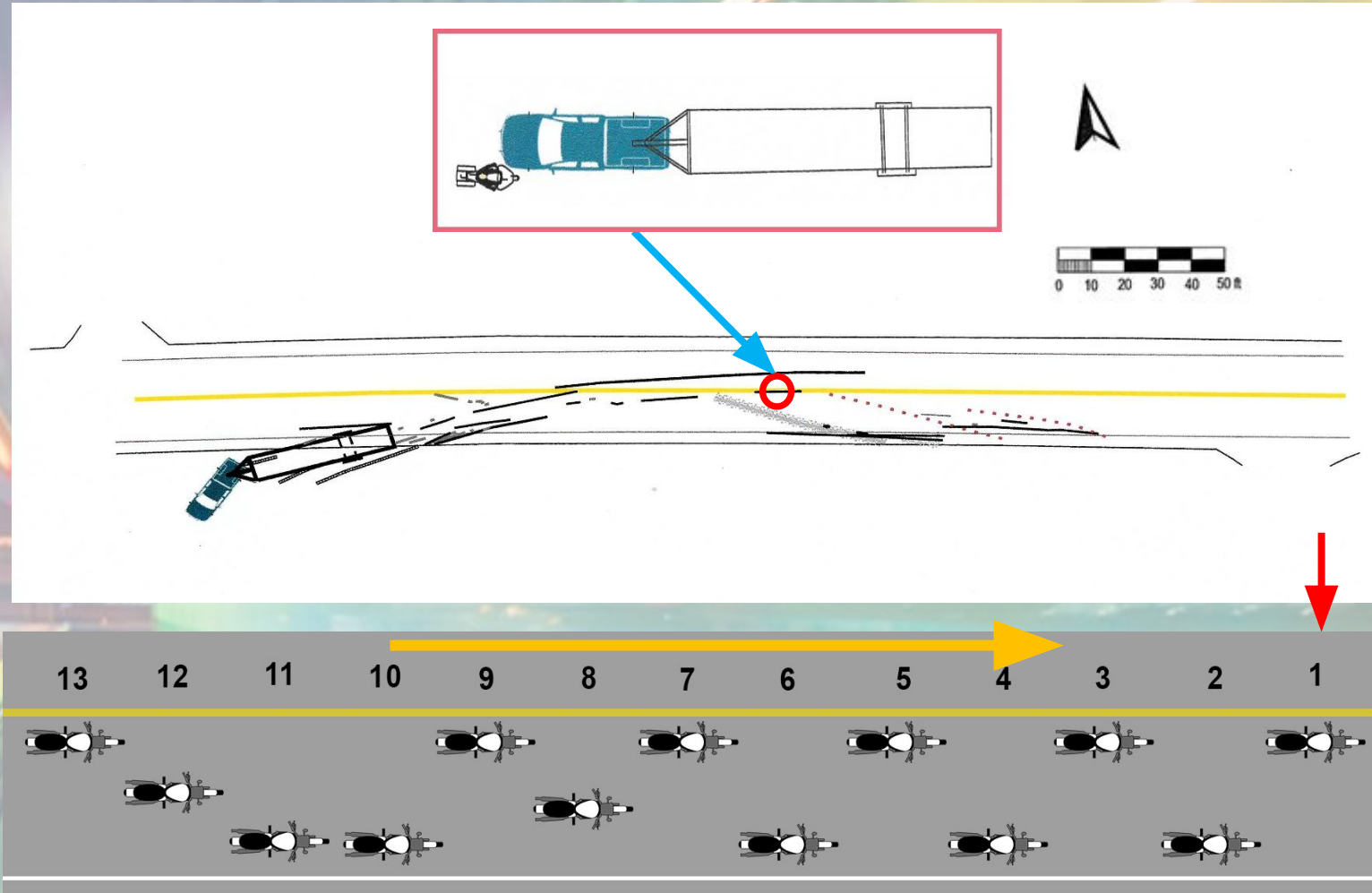


MOVING IDEAS: ADVANCING SOCIETY

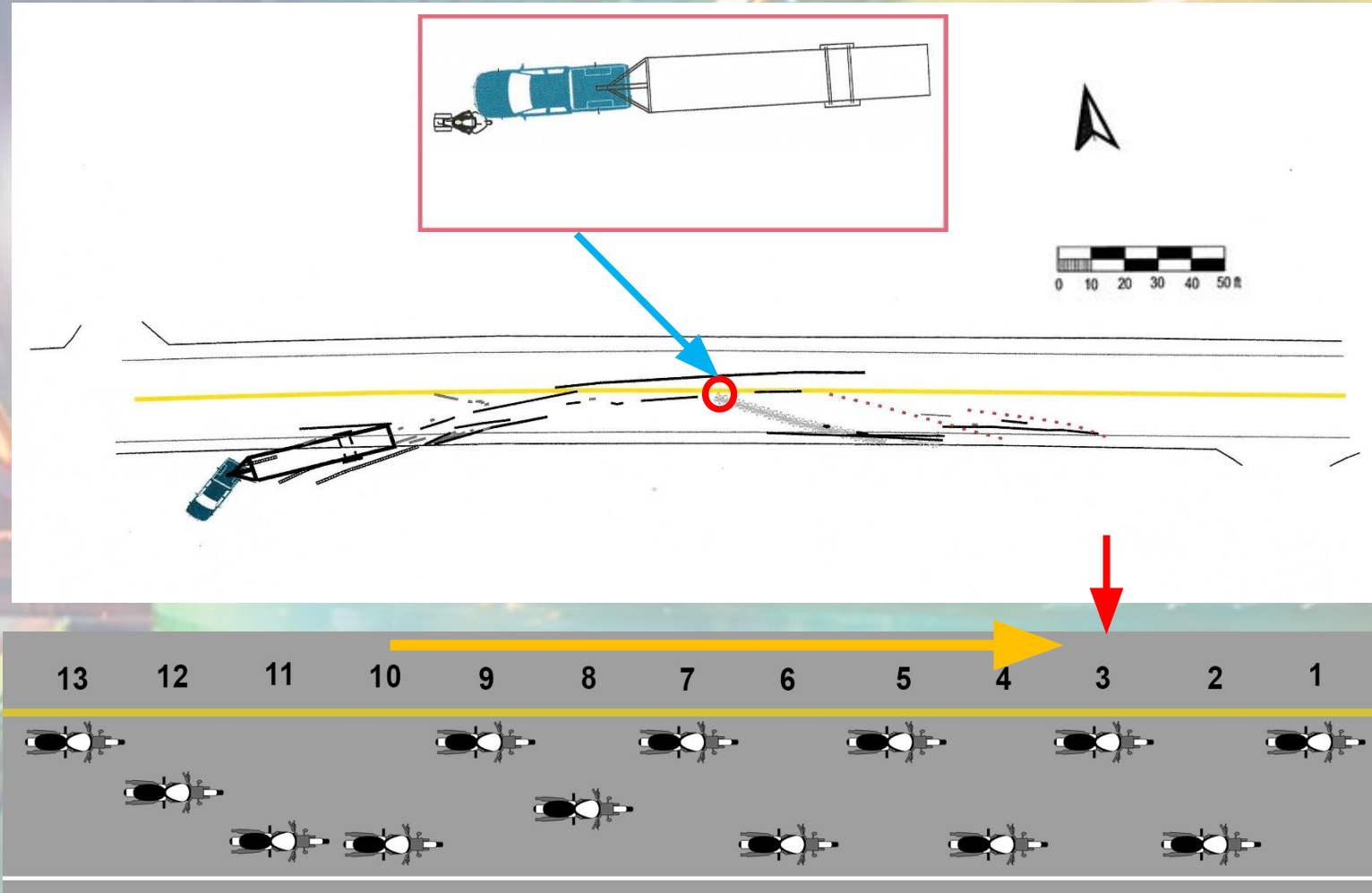
Crash Location



Crash Sequence



Crash Sequence

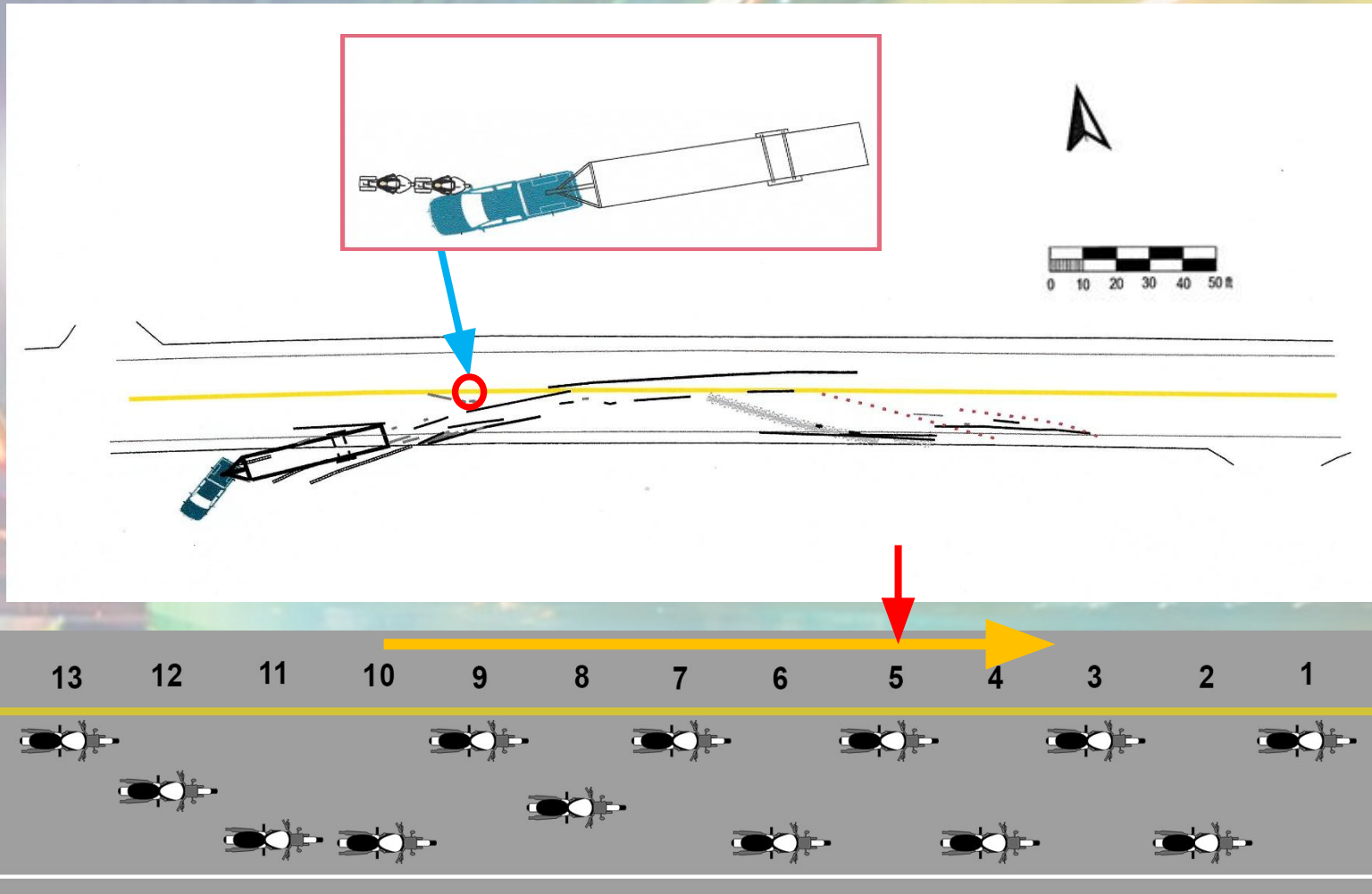


100
YEARS

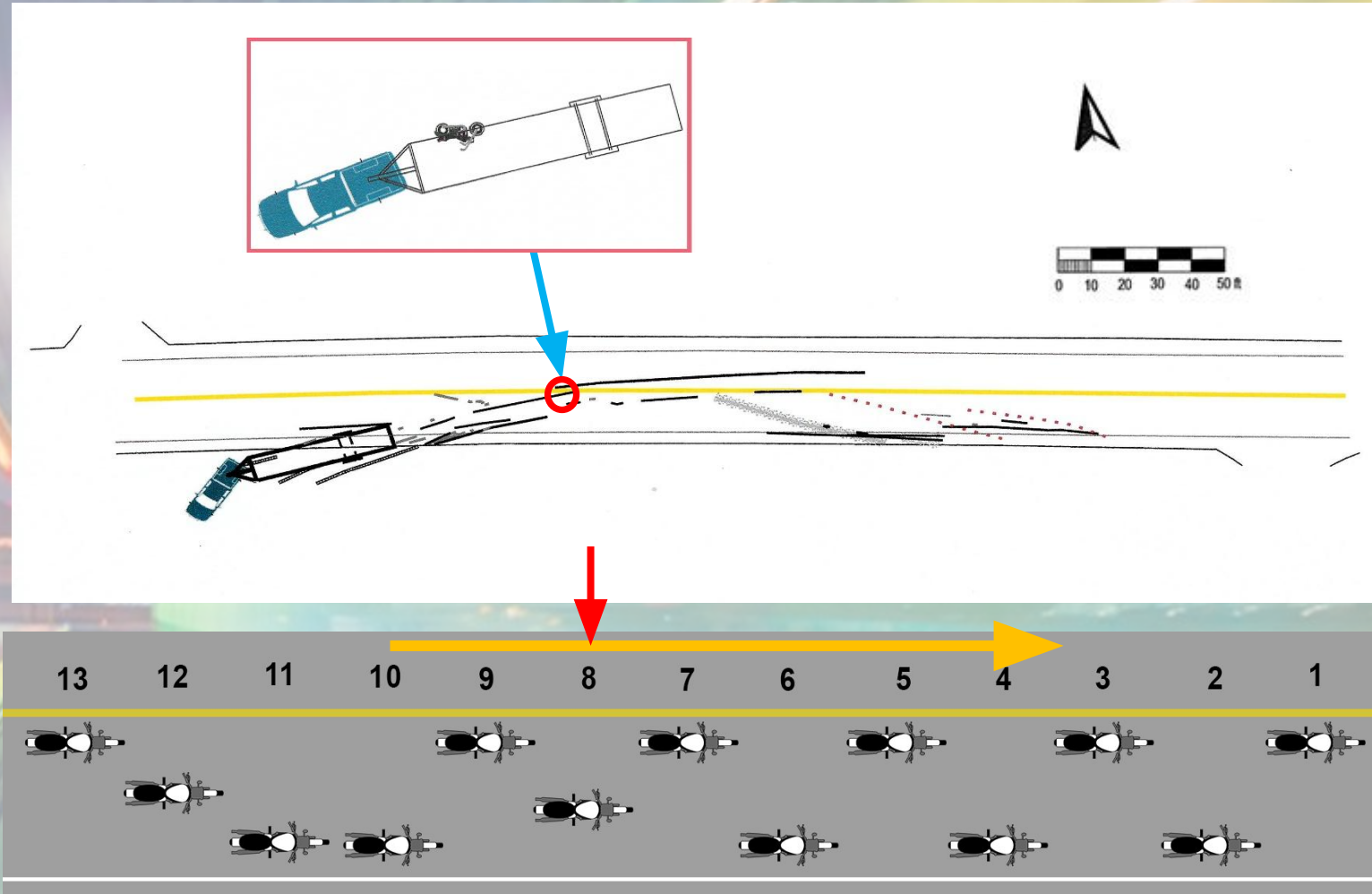


MOVING IDEAS: ADVANCING SOCIETY

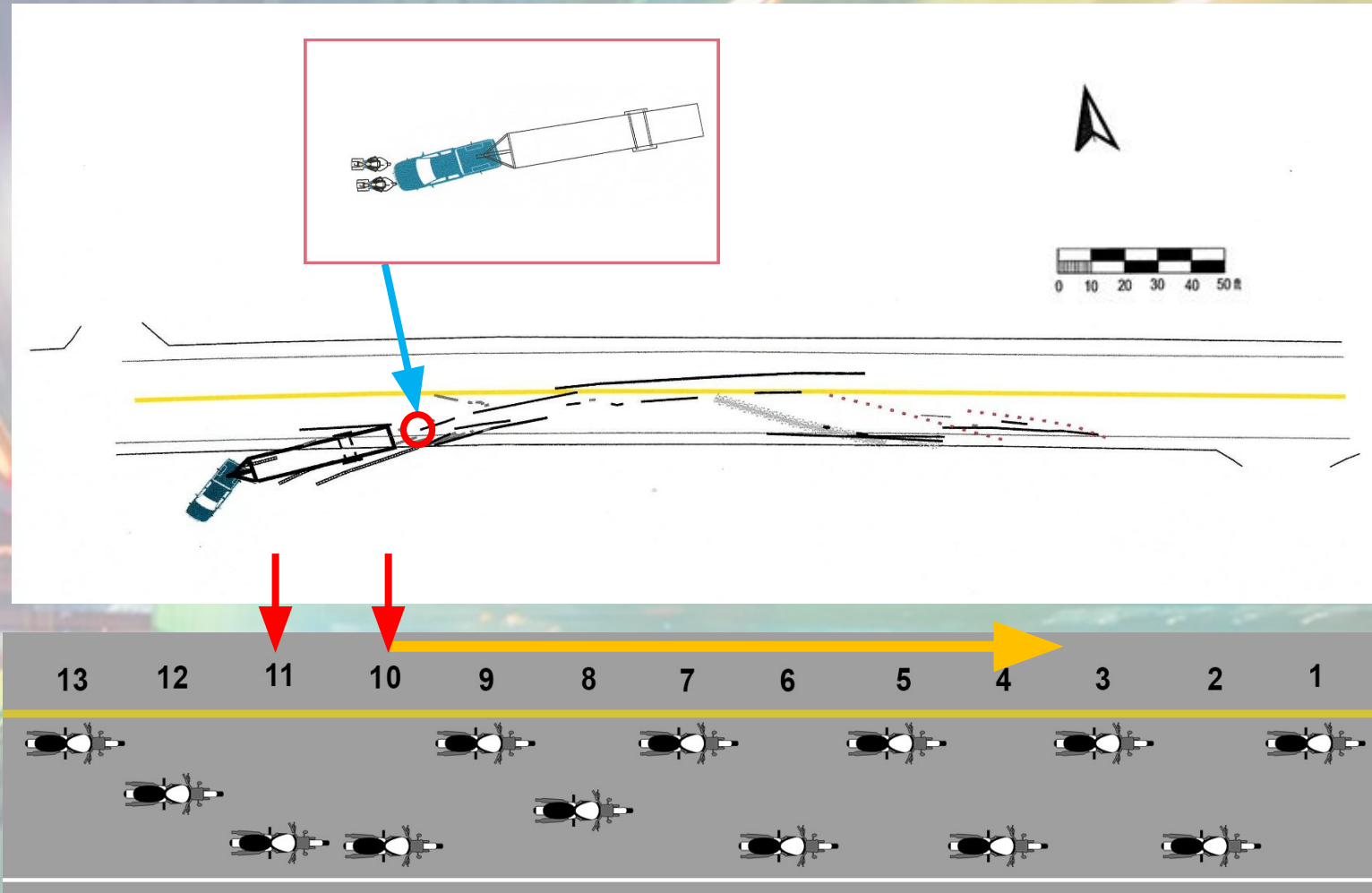
Crash Sequence



Crash Sequence



Crash Sequence



**100
YEARS**

TRB

MOVING IDEAS. ADVANCING SOCIETY.

Vehicles Post Crash



Source: New Hampshire State Police

Injuries

- Motorcycle Riders
 - 5 fatal
 - 1 serious
 - 4 minor
- Motorcycle Passengers
 - 2 fatal
 - 2 minor
- Pickup Truck Driver
 - none

Pickup Driver's Actions

- Evidence of wheel on centerline
- Claimed reaching for a drink caused drift
- Voluntarily provided blood sample

Pickup Driver's Statements

- Driver arrested three days after crash; told police about history of heroin/cocaine use
- Used heroin and cocaine the morning of crash
- Was feeling effects of drugs and used caffeine to take edge off before the crash

Pickup Driver's Drug Use

- Toxicology showed multiple drugs & metabolites
 - Fentanyl, Heroin, Cocaine
- Use within 12 hours
- Centerline crossing most likely due to impairment from the multiple drugs
- Determining specific effects of individual drugs not possible

Pickup Driver's Fatigue

- Information from multiple sources
- 6/18/19 - little opportunity for rest
- 6/19/19 - 8 hours, poor quality rest
- 6/20/19 - 7.5 hours to rest
- Effect of fatigue unclear given drug use

Company Sleeper Berths



Pickup Driver Screening

- Driver Medical
- Previous Employment
- License History

Driver Drug History

- 3-month residential drug program in 2017
- Suspected drug use in previous jobs (2018/2019)
- Arrested for drug possession (2019)
- Operating under the influence in (2019)
- Failed to report on medical

Carrier Screening

- No background check
- No preemployment drug test
- No application
- No license history check

Connecticut Driving Privileges

- Driver stopped May 11, 2019 (45 days)
- Refused urine drug test
- Refusal triggered Connecticut suspension
- Connecticut sent electronic notice to Massachusetts on May 29, effective June 10
- Paper notice also sent to Massachusetts

Sanctions in Massachusetts

- Suspended/revoked/canceled in another state = revoked in Massachusetts
- License should have been revoked June 10, 2019 until at least July 25, 2019
- Connecticut notices were not processed, pickup truck driver's license NOT revoked

Electronic Notification

- Received by Massachusetts software (ATLAS) May 29, 2019
- ATLAS could not process future dates
- Diverted into a queue; queue never monitored or processed
- 365 e-notices, 3 not resolved by other means, only this driver was automatic revocation

Paper Notifications (1)

- Received June 4
- No paper notification
- Tens of thousands
- Suspended more
- Was a known pro



Massachusetts Department of Transportation

Paper Notifications (2)



Massachusetts Department of Transportation

Massachusetts Post Crash

- Modified ATLAS to process future dates
- Created Out-of-State (OOS) Unit to handle all out-of-state notifications
- Created workflow for notifications
- Assigned specific personnel to notifications
- Required daily status updates to management

Notification Issues Widespread

- Rhode Island – 22,500+ not reported to MA
- New Hampshire – 3,852 (7 CDL) suspended
- Reported issues in at least six jurisdictions
- Improved communication will improve safety
- Jurisdictions should perform review of incoming/outgoing notice processes

Motorcycle Rider Impairment

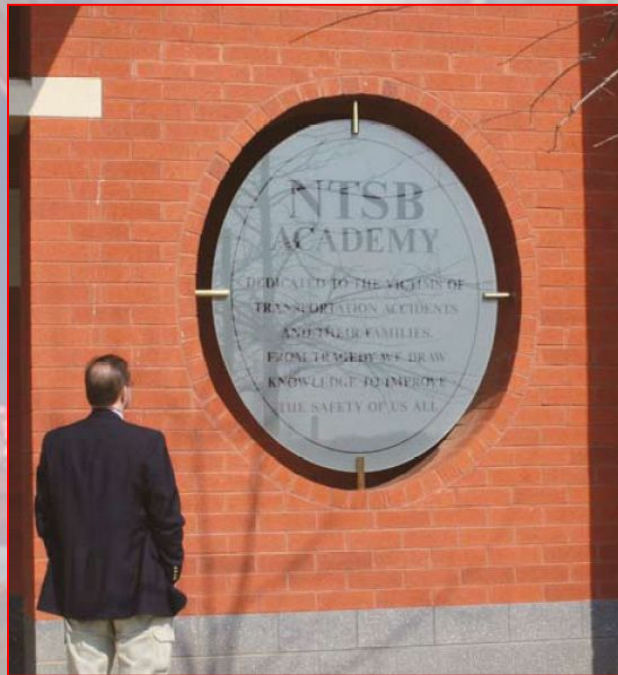
- Alcohol + motorcycles = higher risk
- In 2016, a quarter of all motorcycle rider fatalities had BAC over 0.08g/dl
- Alcohol use increases response time

Motorcyclist Alcohol Use

- Four of six riders tested were positive for alcohol
- Lead rider above New Hampshire *per se* limit of 0.08 g/dL
- Lead rider impaired, undetermined effect
- Unlikely that other riders could have avoided the oncoming pickup truck

Summary

- Pickup driver impaired by drugs
- Pickup driver not screened for substance abuse
- Improvements made/needed in license revocation reporting
- Motorcyclists alcohol impairment



“From tragedy we draw knowledge to improve the safety of us all.”

molloyr@ntsb.gov