



**National
Transportation
Safety Board**

Truck and Bus Safety Mid-Year 2017

Rob Molloy
Director,
Office of Highway Safety

NTSB Most Wanted List 2017-18

Increase Implementation of Collision Avoidance Technologies	Prevent Loss of Control in Flight in General Aviation	End Alcohol and Other Drug Impairment in Transportation	Require Medical Fitness	Strengthen Occupant Protection
Ensure the Safe Shipment of Hazardous Materials	Improve Rail Transit Safety Oversight	Reduce Fatigue-Related Accidents	Eliminate Distractions	Expand Recorder Use to Enhance Safety

Safety Issues

- Medical/Oversight bus drivers
- Infrastructure
- Migrant Workers
- Technology

Completed Investigations

- San Jose, CA
- Baltimore, MD*
- Speed Study
- Williston, FL

San Jose, CA (Jan 19, 2016)



Crash Location



Source: Google Earth image dated March 28, 2015

Forward looking camera



Safety Issues

- Repair of traffic safety devices
- Signage and roadway markings
- Driver risk management
- Maintenance and use of passenger restraints on motorcoaches
- Collision avoidance systems

Baltimore, MD (November 1 2017)



Speed Study I

- Identify speeding-related performance measures.
- Identify best practices for data-driven, high-visibility enforcement programs
- Improve data collection.
- Assess the effectiveness of point-to-point speed enforcement in the United States
- Adaptive speed control

Speed Study II

- Collaborate with other traffic safety stakeholders to develop and implement an ongoing program to increase public awareness of speeding as a national traffic safety issue
- Establish a program to incentivize state and local speed management activities
- Improve guidelines for speed limit determination (85%)
- Incorporate the safe system approach for urban roads
- Automated speed enforcement

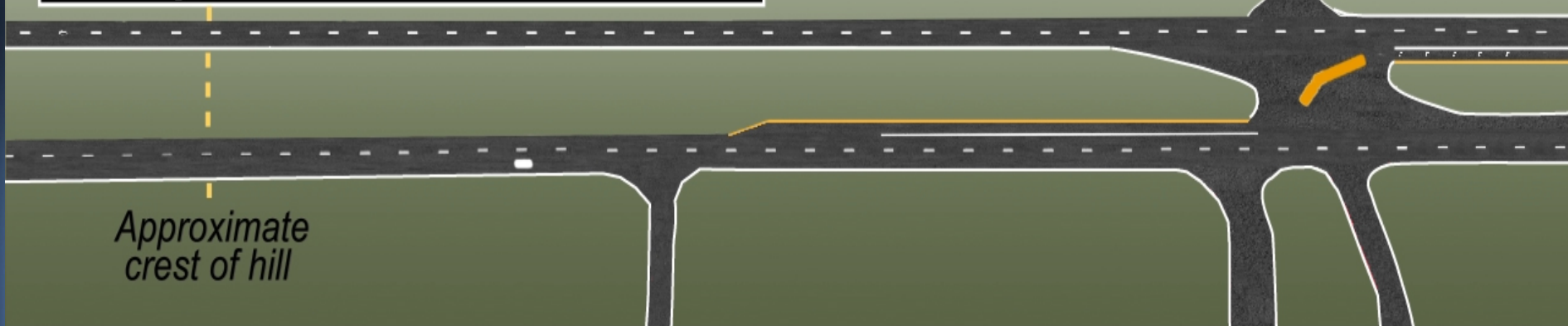
Williston, FL (May 7, 2016)



Truck Motion Scenarios

Car Speed Remained Constant

Scenario A



Car speed: 74 mph

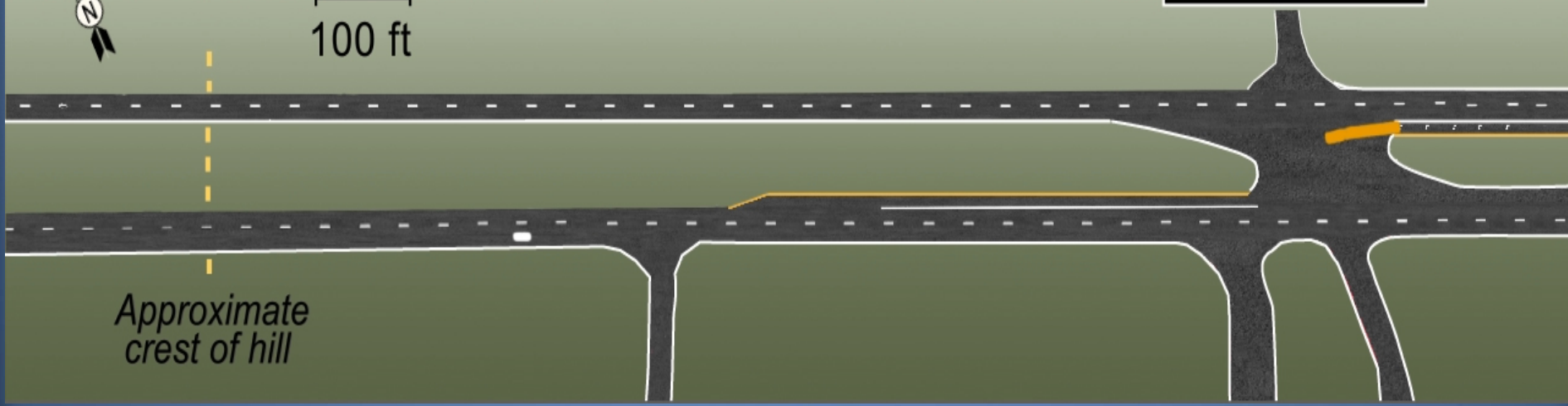
Time to Collision: 7.5 sec

Distance to Collision: 814 ft



100 ft

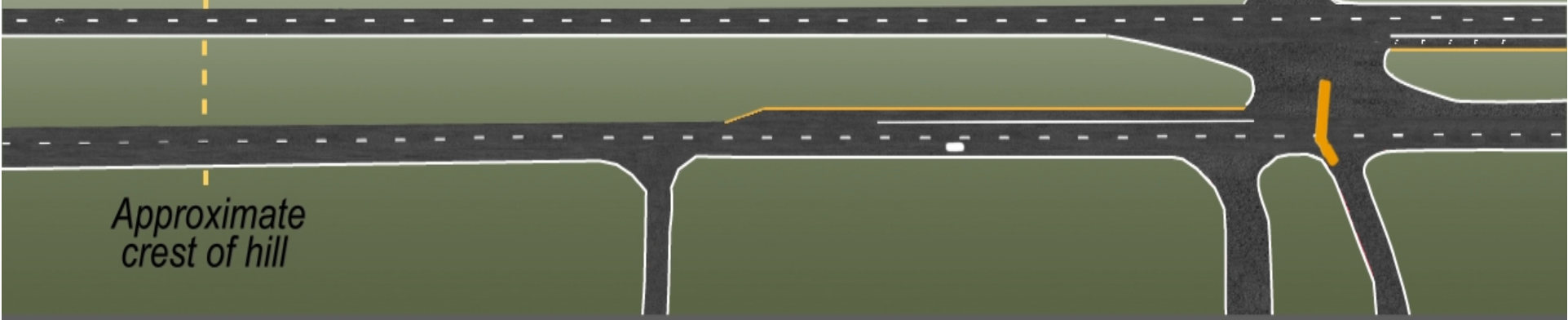
Scenario B



Truck Motion Scenarios

Car Speed Remained Constant

Scenario A

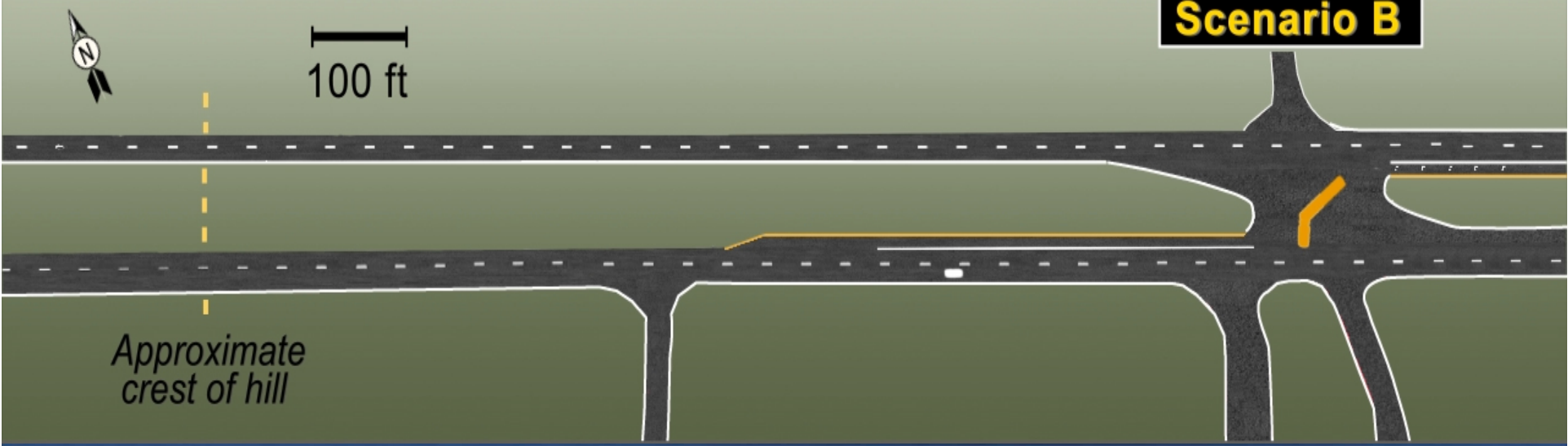


Car speed: 74 mph

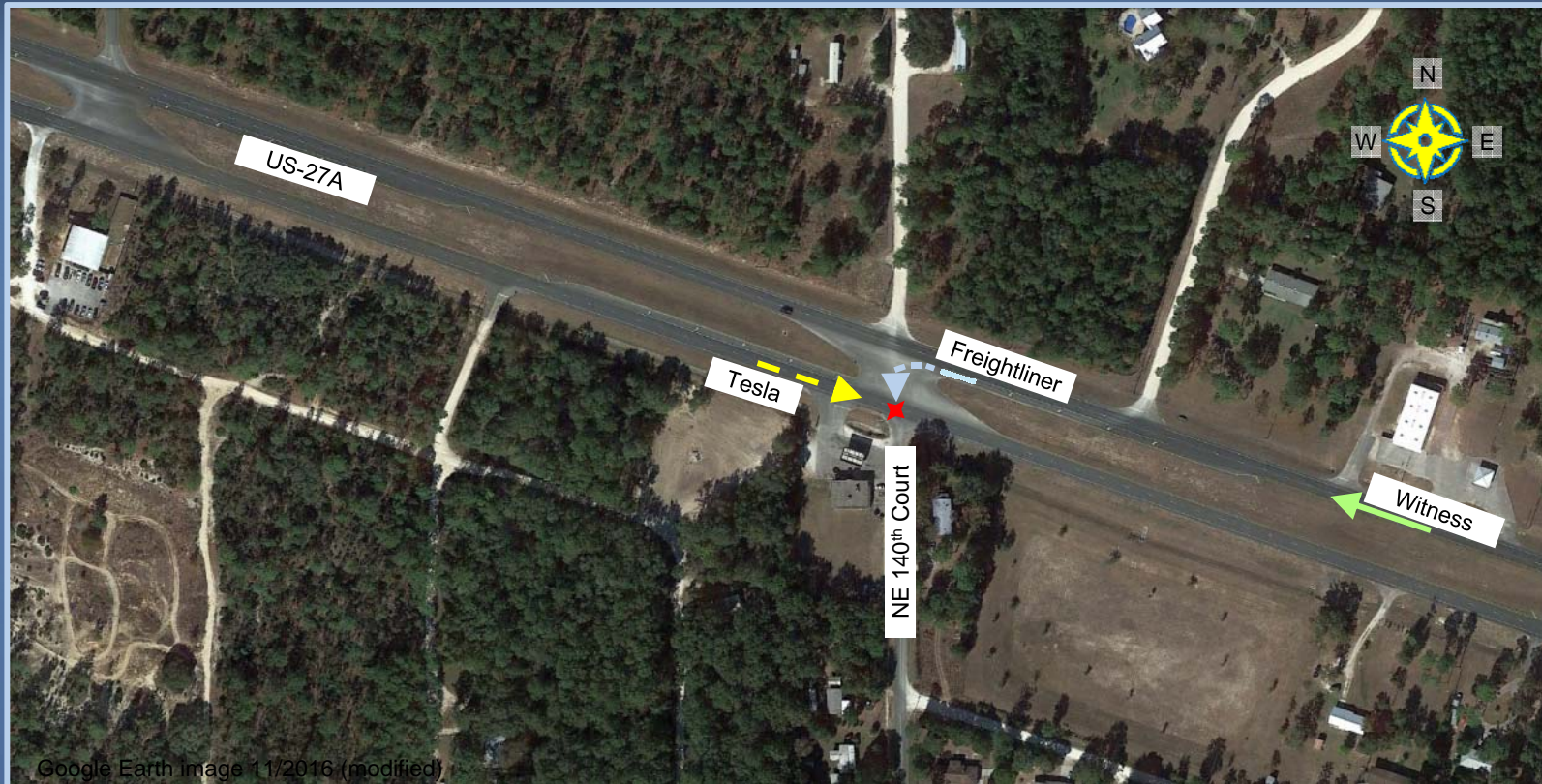
Time to Collision: 3.4 sec

Distance to Collision: 369 ft

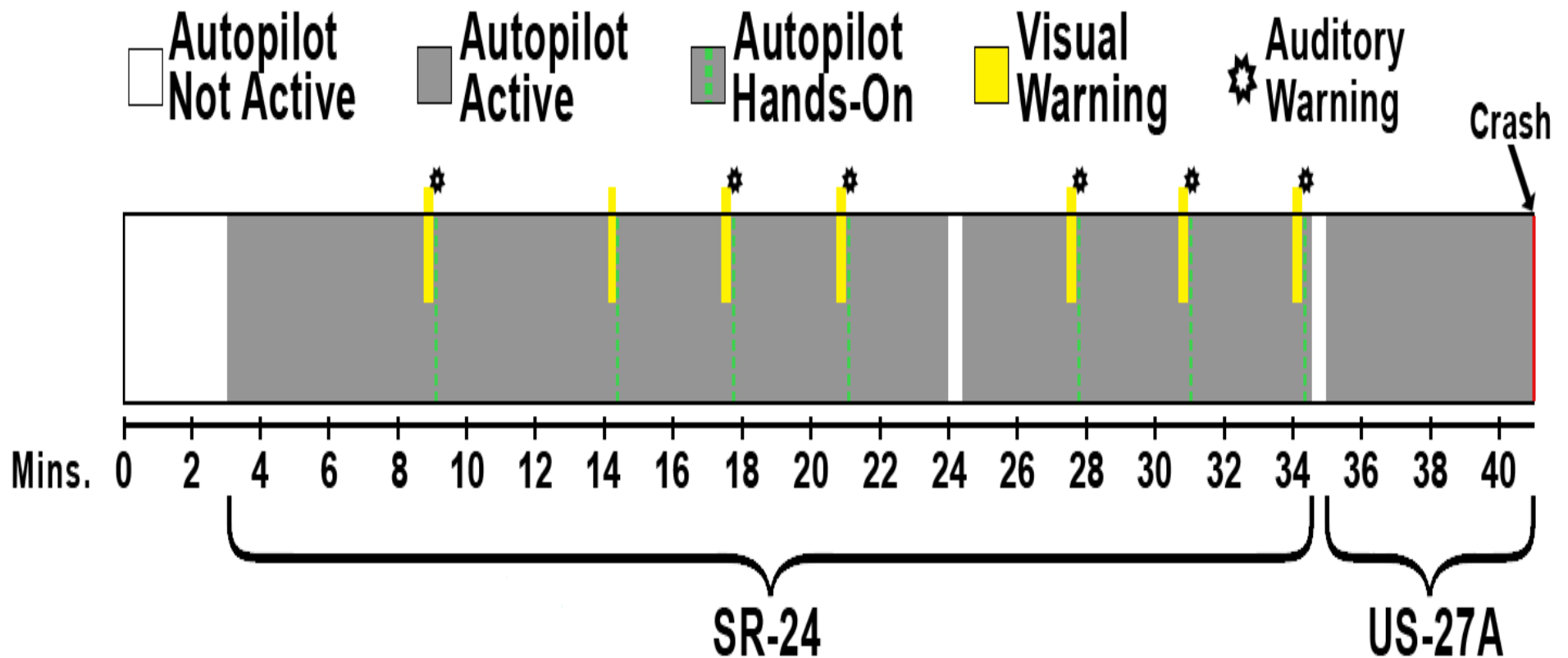
Scenario B



Location



Driver Engagement



New Investigations

- Biloxi, MS
- Concan, TX
- Lake Forest, CA

Biloxi, MS (March 7, 2017)



Biloxi Crossing



Concan, TX (March 29, 2017)



Lake Forest, CA (8/25/2017)





National Transportation Safety Board