

2024 Commercial Vehicle
Safety Summit

*Using Telematics, AI,
and Video to Identify
Both High Risk and
Safe Drivers*

motive



Presenter



Gary Johnson
Head of Safety and
Compliance Strategy at
Motive

With four decades of safety leadership experience, Gary has spent the past nine years consulting on innovative program solutions to fit the risk and needs of clients. Today he works with Motive's clients to structure enterprise risk management programs and develop alternative risk solutions to benefit the industry.



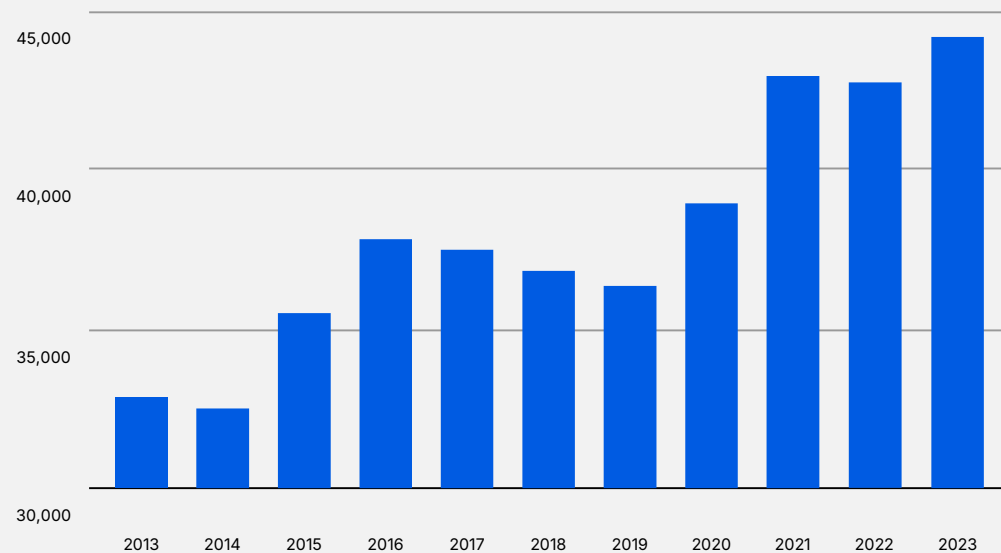
02

State of safety

Current state of safety

- **44,450 people died** in traffic crashes in 2023.
- This is a **13.6% increase** compared to pre-pandemic 2019.
- A work related injury occurs every **96 minutes** in the U.S.
- Transportation incidents account for **38%** of all occupational fatalities.
- More pedestrians died last year than at any other point in the last 40 years.

Fatalities from vehicle-related accidents



[NHTSA](#) / [NSC](#)



The costly risk of visibility gaps on the road

Distracted driving (phone call, texting)

9 people

die everyday from accidents caused by distracted driving ([NHTSA](#))

Close following

2.2M

or 33% all crashes are from rear-end collisions ([NHTSA](#))

Rolling through stop signs

2.6M

or over 50% of crashes occur at or near intersections ([FHWA](#))

Failure to wear a seatbelt

\$11B

in total U.S injury-related crash costs from not wearing a seat belt ([NHTSA](#))

All unsafe driving behavior

\$3.6M

average cost of a fatal collision involving a large commercial vehicle ([FMCSA](#))

All unsafe driving behavior

94%

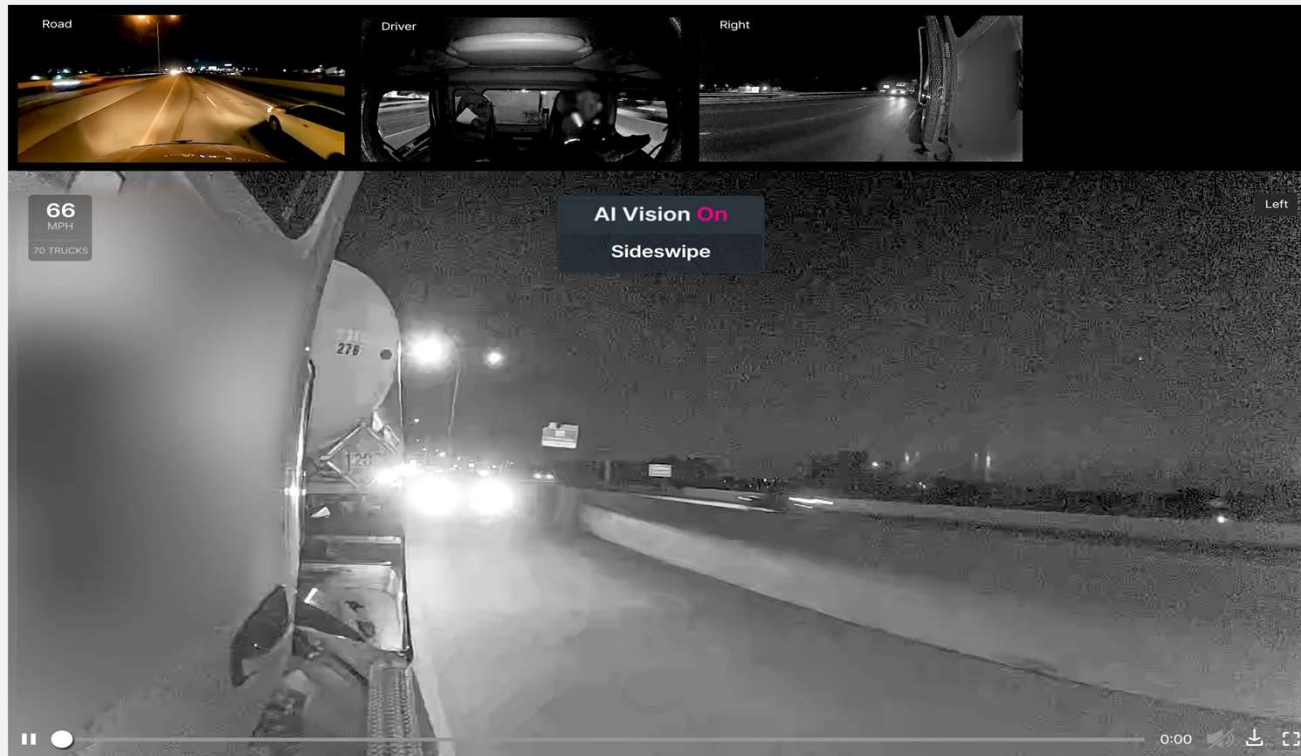
of primary contributing factors to crashes were due to the driver ([NHTSA](#))



Driver environment is vast



Public interaction is challenging



Current state of safety

Hard Brake, Collision

65 MPH	55 TRUCKS	PWR	-- RPM	INTENSITY -9.4 mph/s	CRUISE Ready
		ACC	0 %	BEARING 87° NE	SEAT BELT --
		BRK	-- %		

Identifying High Risk and Safe Drivers



Shifting to proactive/ preventative safety model



Reactive vs Proactive

Reactive

- Waiting until an accident to happen to address safety training seriously
- Responding to an accident and handling the damages after the fact
- Not understanding what your risk is across drivers, vehicles, and program.

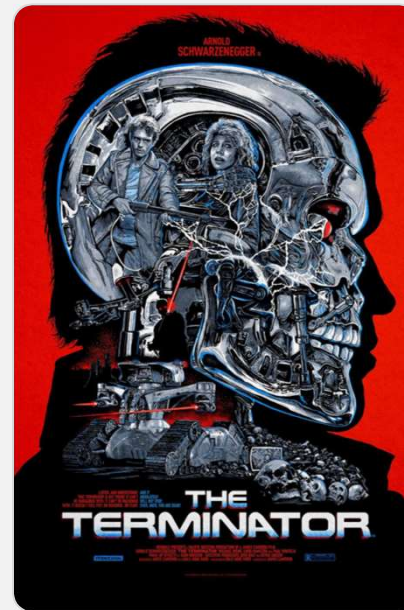
Proactive

- Anticipating problems before they happen using predictive data.
- Proactive driver coaching is timely coaching.
- Similar to sports, capture video and driver data to identify unsafe driving habits and alert drivers to them in real time..



AI Technologies

What is AI?



Reality

amazon alexa



Google Assistant



IBM Watson



TESLA
AUTOPILOT



INTERCOM



TARANIS

OpenAI
GPT-3

VIDEO



ring
DOORBELL



BOSTON
DYNAMICS'
SPOT



SOFTBANK
ROBOTICS'
PEPPER



LIVEPERSON®

MATHia®

FAST FORWARD®
BY CARNEGIE LEARNING

Betterment

zebra
MEDICAL VISION

BLUE RIVER
TECHNOLOGY
SEE & SPRAY



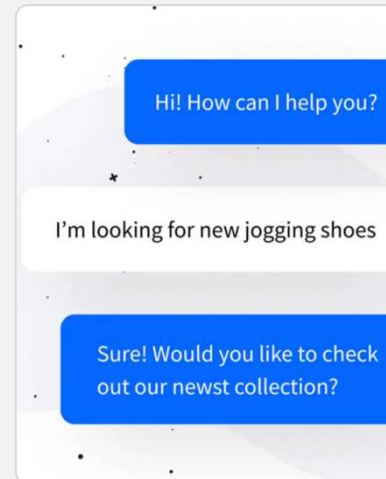
AI in the physical economy



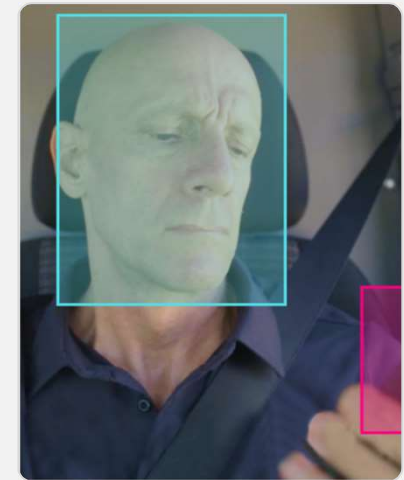
Preventive Maintenance



Scheduling & Route Optimization



Customer Support



Driver Safety

What does a computer see?

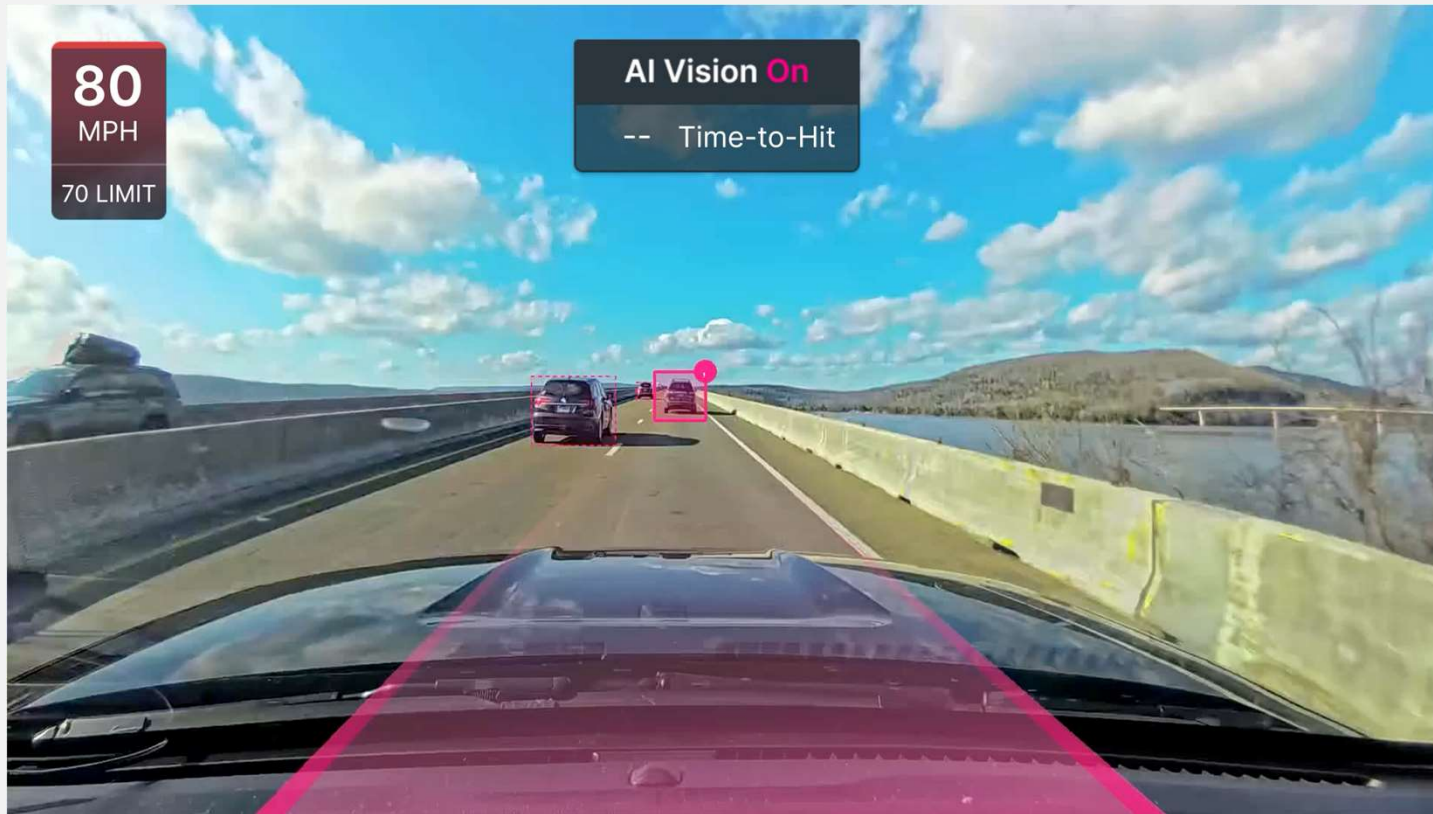


Object detection and classification



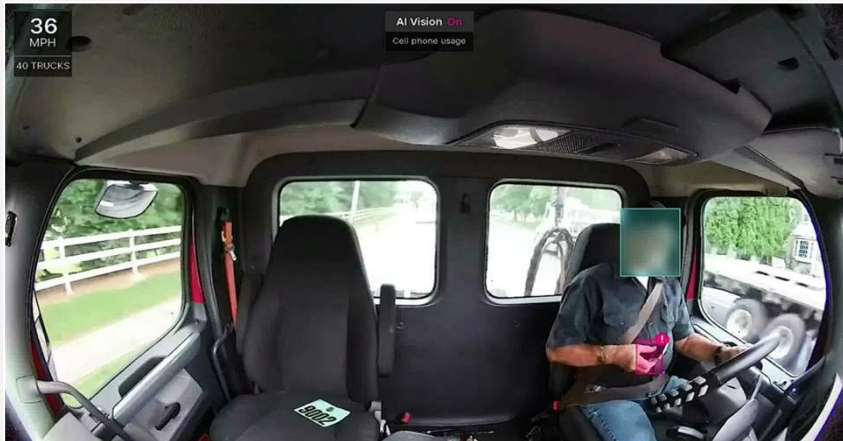
Background and foreground detection

Incremental improvements, real results: The bottom-line impact of fleet safety

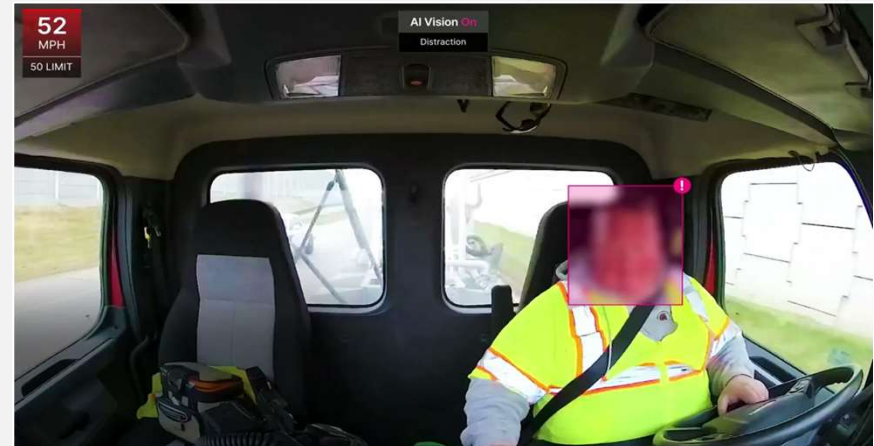


Once drivers are used to in-cab alerts, gradually turn on driver-facing behaviors if they're off.

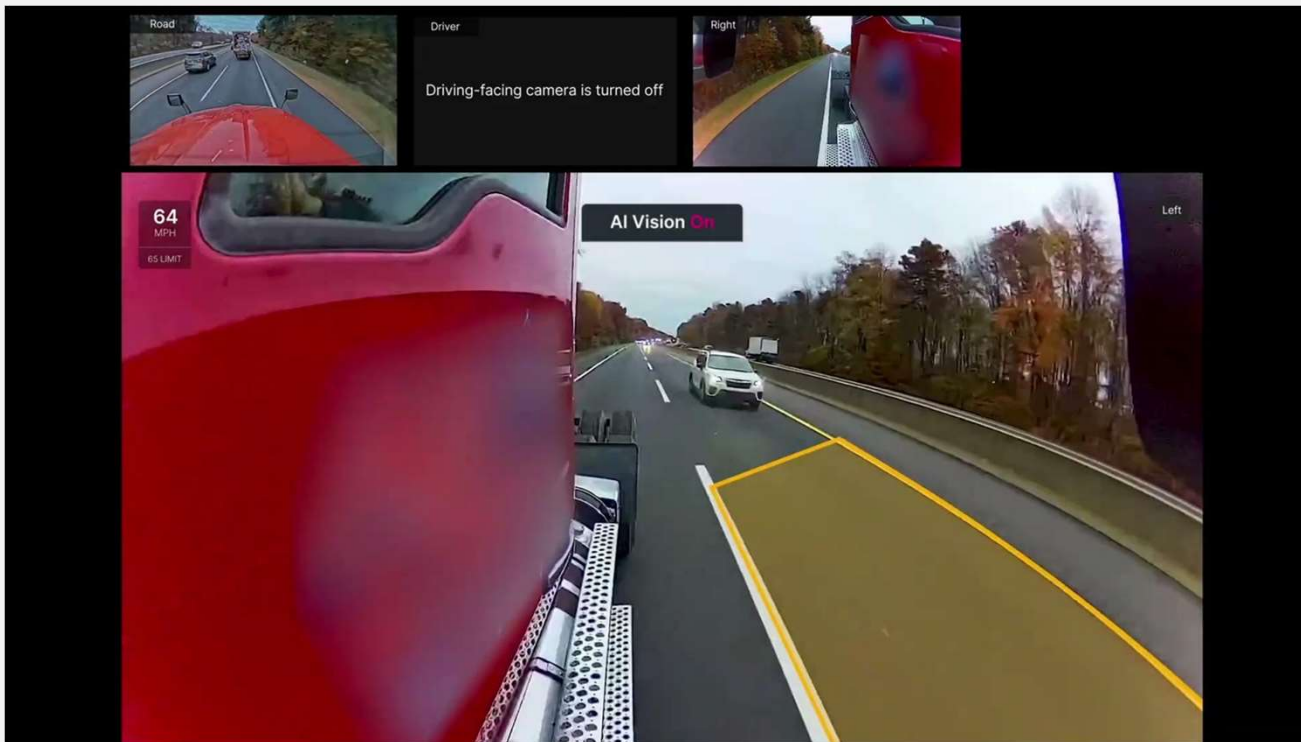
Cell phone usage



Distraction



Prevent collisions with blind spot monitoring AI.



Driver safety

AI Dashcam customers prevent accidents through active coaching, reduce accident-related expenses, and reduce insurance costs.

57%

Reduction in accidents within 4 months of deployment

30%

Reduction in accident-related costs

21%

Reduction in insurance costs

[2023 Motive ROI Report](#)



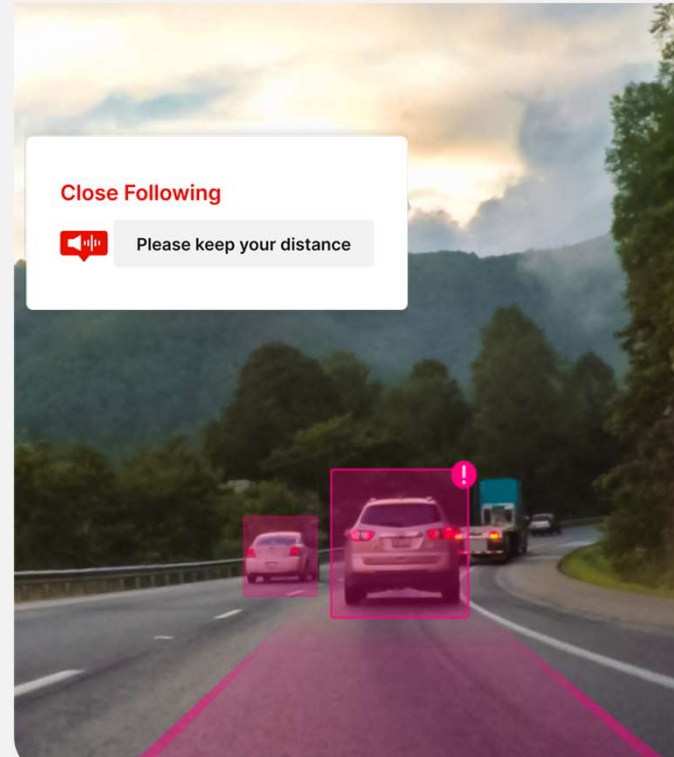
AI saves lives.

75%

Reduction in accidents within months of deployment with in-cab alerts and regular coaching.

- ↓87% Cell Phone Usage
- ↓79% Distraction
- ↓79% Seat Belt Violation
- ↓73% Drowsiness
- ↓60% Close Following / Tailgating

[Safety ROI Report](#)



Crashes can happen in a split second



Thank you!

Questions?

Gary Johnson, gary.johnson@gomotive.com

