



**Winter Maintenance**

39th Annual Local Roads Conference

*Chad Schiermeister, Crew Leader*  
*Bismarck, ND*  
*cschiermeister@bismarcknd.gov*

1

Staffing Required to Plow your Lane Miles




2

**Appropriate Snow/Ice Control Equipment Needed**

| INVENTORY | EQUIPMENT  |
|-----------|--|
| 9         | Motor Graders  |
| 9         | Front End Loader Snow Plows  |
| 5         | Snow Blowers   |
| 1         | 6-Cubic Yard Sand Spreader   |
| 9         | 9-Cubic Yard Sand Spreaders  |
| 5         | Single Axle Trucks with Snow Plows and 4 Sanders with Liquid Brine Applicators   |
| 2         | Tandem Axle Trucks with Snow Plows and Sanders with Liquid Brine Applicators     |
| 3         | Anti-Icing Tanks with Boom Applicators able to be slid in and out of dump trucks |
| 2         | 30-yard snow roll-off boxes  |
| 2         | Tandem Hook Trucks   |
| 1         | Tool Cat (for sidewalks blower, broom, plow)                                     |

3

Equipment Planning and New Staff




4

**Equipment Operator's Rodeo**

**When:** Wednesday, October 9, 2024  
8:30 a.m. Rules Meeting 9:00 a.m. Rodeo Begins


**Where:** Bismarck Landfill – 2111 N 52<sup>nd</sup> Street, Bismarck, N.D. 58501

**Registration:** **DEADLINE for operators to register is Monday, October 7, 2024**

**Contact:** Email: [cschlermeister@bismarcknd.gov](mailto:cschlermeister@bismarcknd.gov)  
Call: Chad Schlermeister (701) 490-6314  
Keith Glass (701) 355-1714 or (701) 220-6445

**Event Details:** This event is a great way to highlight the skills of the city/county equipment operators and to promote professional fellowship through good-natured competition.  
**Equipment:** Single-Axle Plow Truck, Loader, and Motor Grader.  
The competition consists of hands-on operational test using basic skills to maneuver equipment through a timed challenging obstacle course.

**Lunch:** RDO Equipment Co. will provide lunch for participants and judges.



5

## Ordering Supplies



6

## Brine Operations



7



8



Bismarck

9

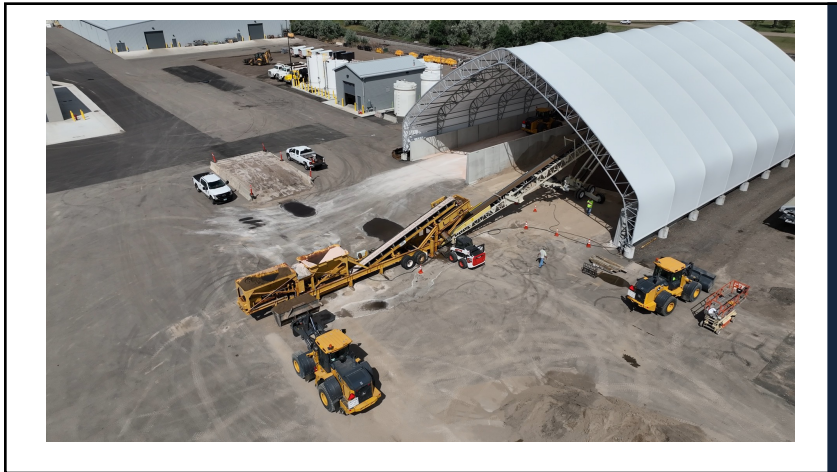
### Sand/salt Operations

**Tracking Usage**

- Chemicals
- Sand
- Salt



10



11



12

### Calibrating Sanders and Brine Trucks



13

### Making Plans - Before the Storm



14

### Pre-Storm Activities

- Check blade and moldboard on snowplow truck
- Mount to truck to ensure proper operation
- Check hydraulic hoses and fittings
- Snowplow attachment to make sure it is tight
- Visual check for any leaks



15

### Pre-Storm Activities

- Check levels on hydraulic tank
- Switch to make sure blade will go side to side for easy snow removal
- Install lights to ensure the ability to see while plowing snow
- Adjust trip chain on plow



16



Tree Removal and Mowing – Pre-storm



17

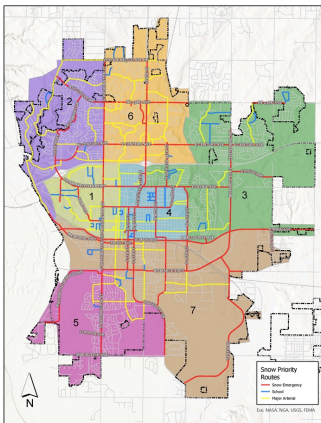
Notification of other Departments

- Intensity of storm
- Who do you notify and why?
- Purpose of notification



18

City of Bismarck Snow Routes Map



- Priority 1: Snow Emergency Routes (Red colored roadways on Snow Emergency Route Map)**
- Priority 2: School Emergency Routes (Blue colored roadways on Snow Emergency Route Map)**
- Priority 3: Major Routes (Yellow colored roadways on Snow Emergency Route Map)**
- Priority 4: Residential Routes (Gray colored roadways on Snow Emergency Route Map)**



19

Snow Operations – When is plowing done?


| Priority | Triggers Snow Plowing | Snow Accumulation |
|----------|-----------------------|-------------------|
| 1        | Emergency Routes      | 2 inches          |
| 2        | School Routes         | 3 inches          |
| 3        | Major Routes          | 3 inches          |
| 4        | Residential Routes    | 4 inches          |



20

### Snow Plowing Operations


| Who Decides                      |                          |                        |
|----------------------------------|--------------------------|------------------------|
| Plow to the middle of the street | Both sides of the street | One side of the street |



21

### Snow Plowing Operations


- Curb/Gutter sections
- Roundabouts
- Multi-lane
- Parked cars
- Cul-de-sacs



22

### Snow Plowing Operations

- Site Distance Issue
- Cross traffic
- Pre-emptive emergency transponder to plow through intersections
- Intersections
- Signalized Intersections
- Driveways



23

### Clearing Snow



24

### Snow Operations



25

### Snow Gates – When are they used



26

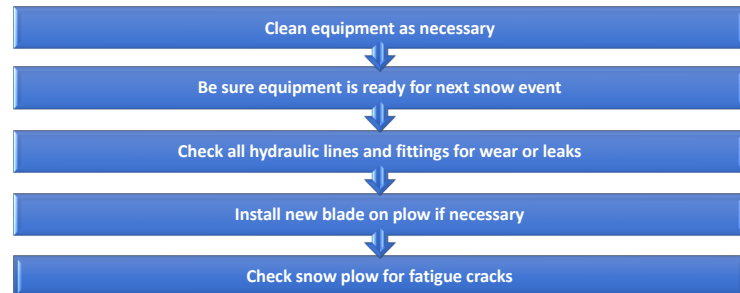
### Communicating with the Public

- Press Releases
- Website Posts
- Facebook post
- Media interviews



27

### Post Storm Activities



28

City of Bismarck Resources

- [City of Bismarck Snow-Removal](#)



29

Any Questions?

**Chad Schiermeister**  
Crew Leader  
Street/Sign Department  
Office: 701-355-1715  
Cell: 701-400-6314



30