

Welcome

North Dakota
ASPHALT
conference

NDSU | UPPER GREAT PLAINS TRANSPORTATION INSTITUTE
NORTH DAKOTA LOCAL TECHNICAL ASSISTANCE PROGRAM



U.S. Department
of Transportation
Federal Highway
Administration



DAKOTA ASPHALT
PAVEMENT ASSOCIATION

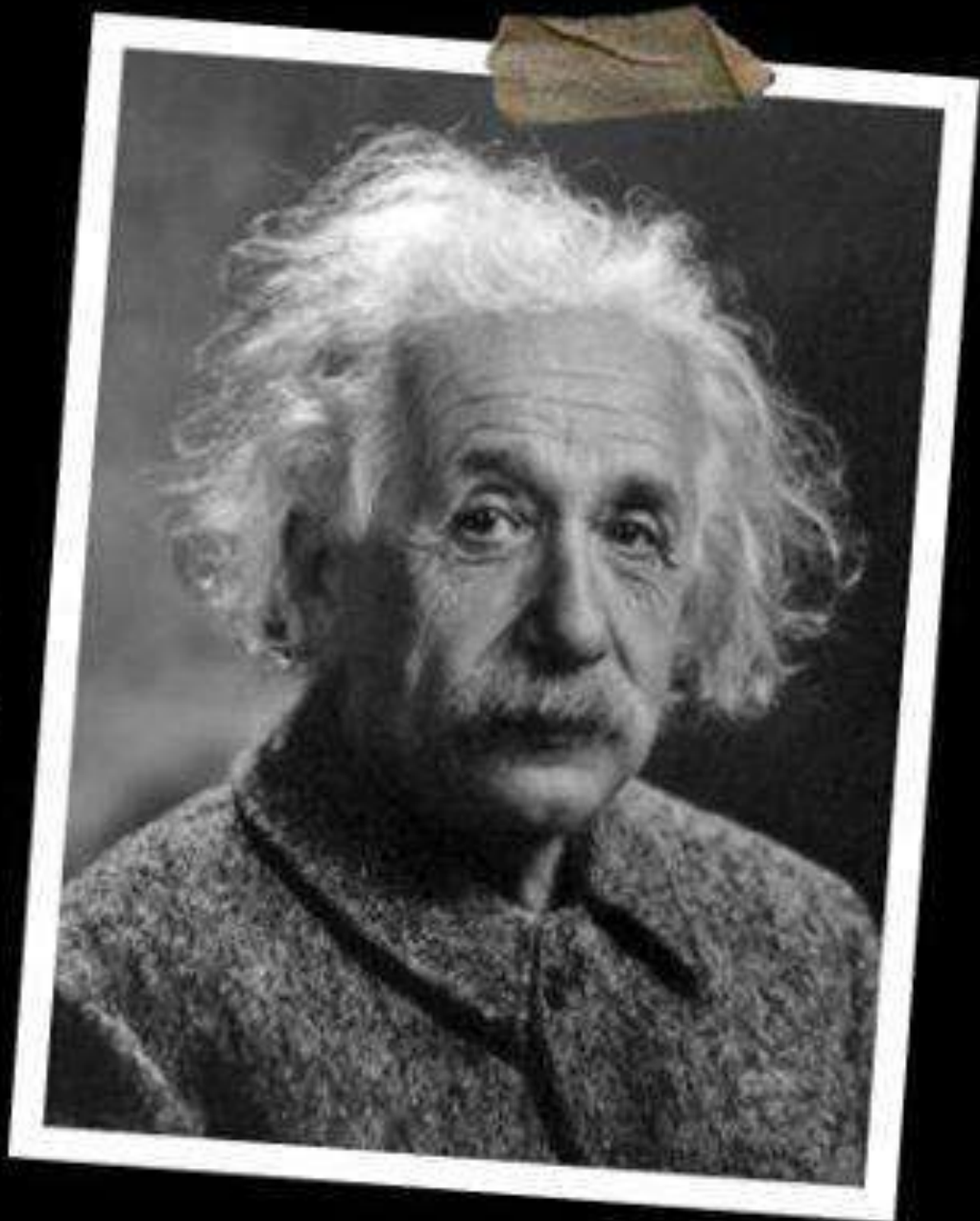
BETTER STRENGTH
BETTER PAVEMENT
BETTER LIFE

North Dakota Asphalt Conference

Bismarck - April 11-12, 2023

FIRST TIME
ATTENDEE

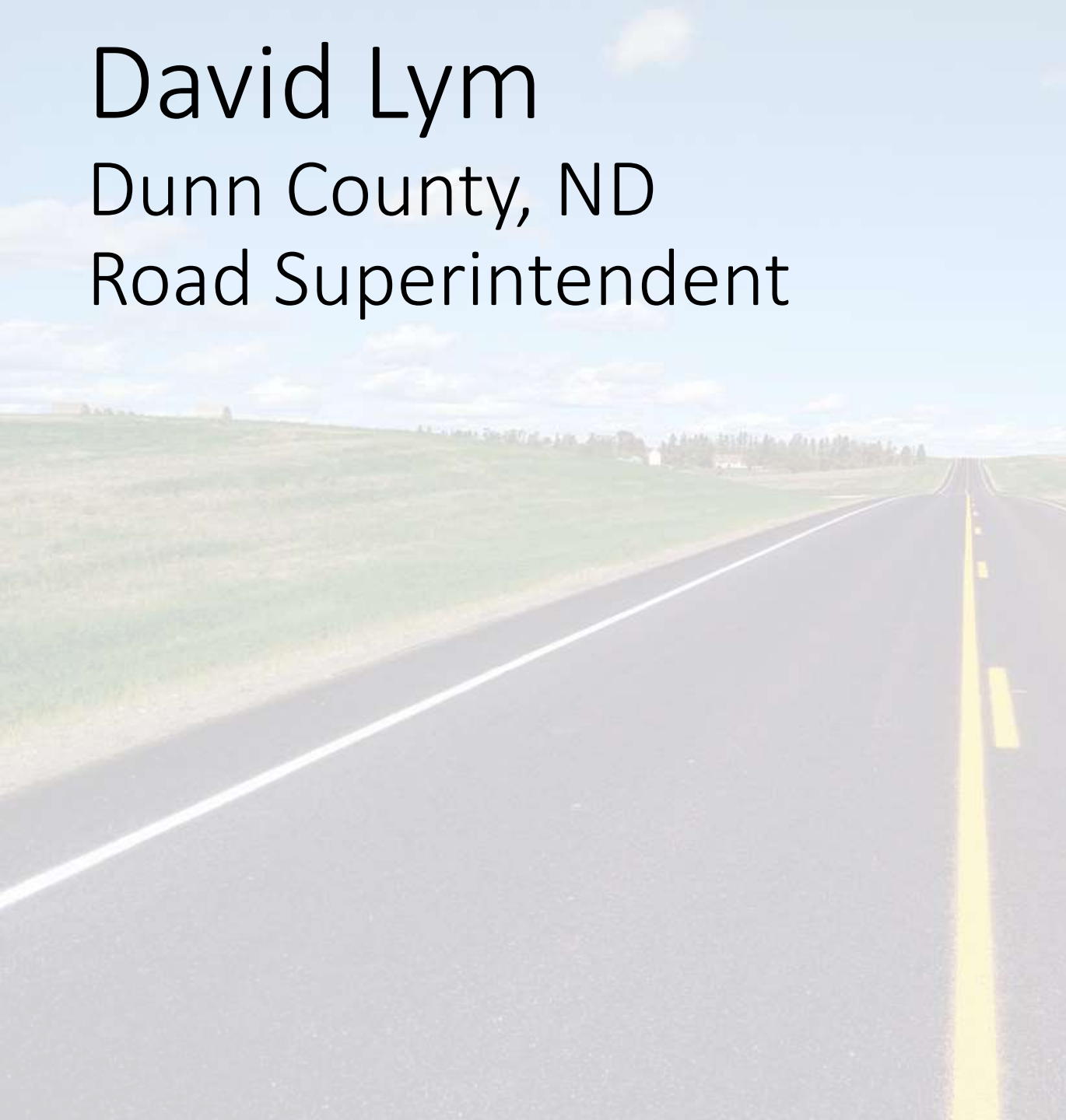
**"Education is not
the learning of
facts, but the
training of the mind
to think."
-Albert Einstein**



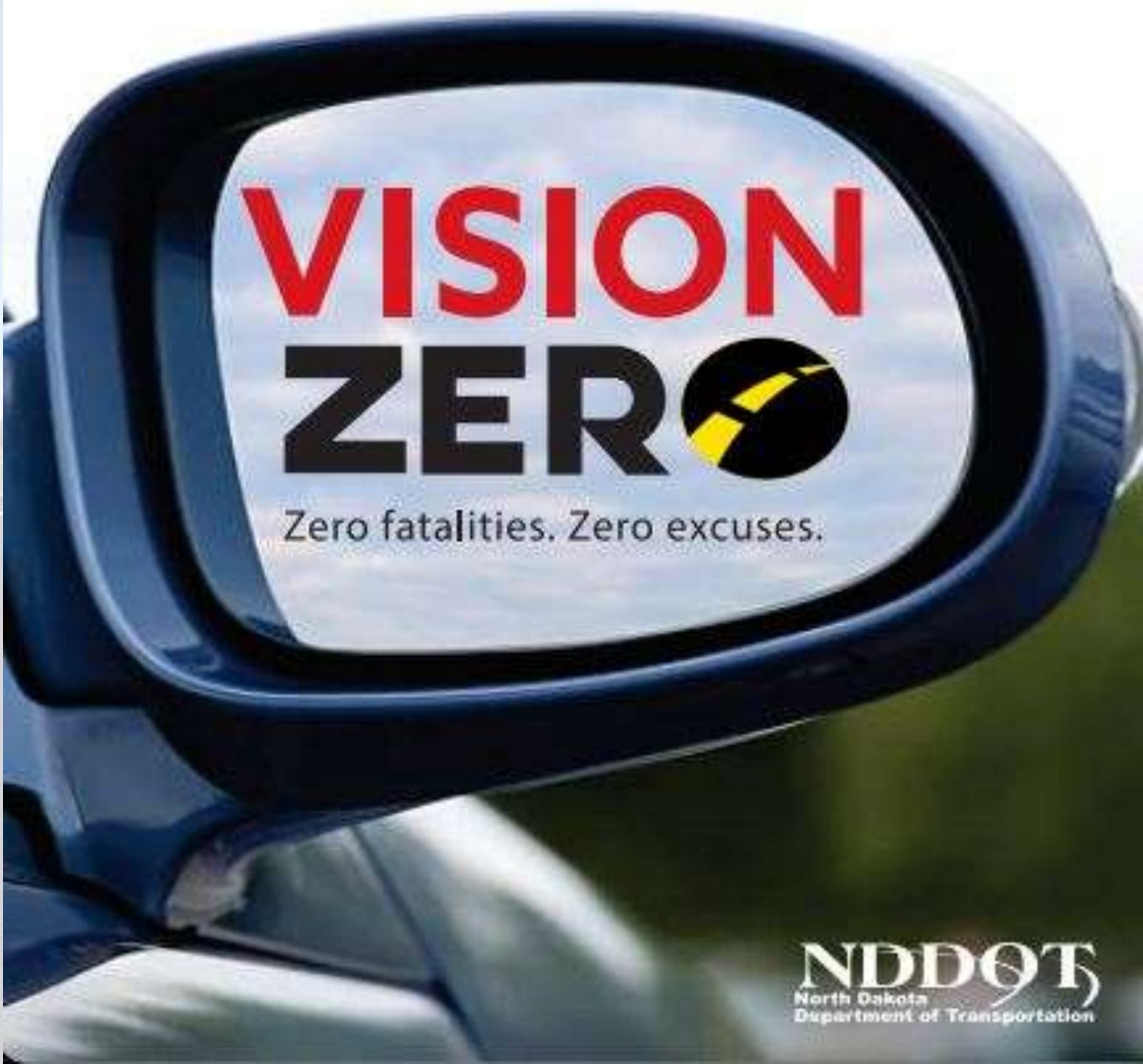
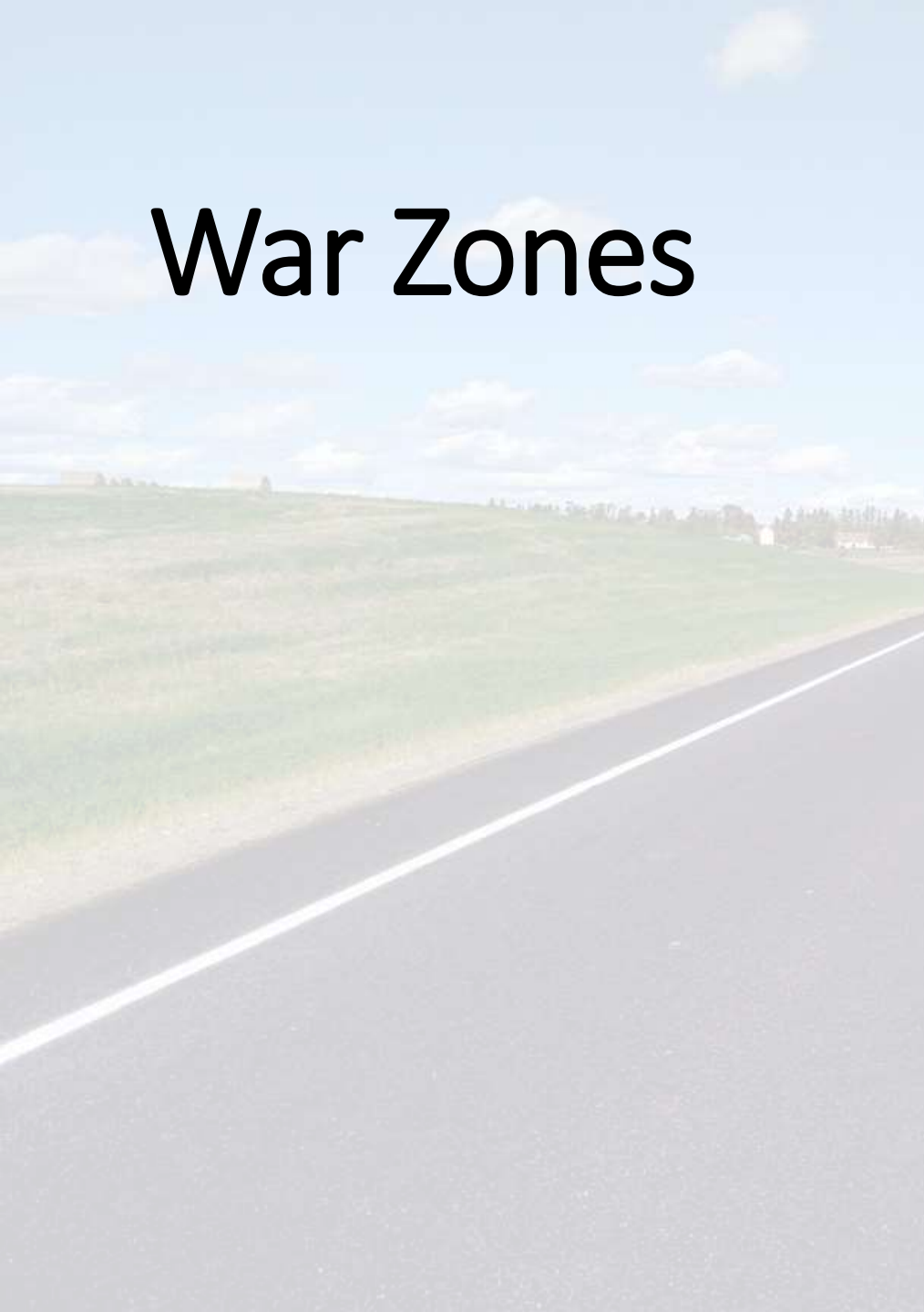


Crosby - 2017

David Lym
Dunn County, ND
Road Superintendent



War Zones



ON-SCENE FIRST AID FOR ASPHALT BURNS

Skin (Do NOT delay)

- Immediately place the affected skin under running/flowing water for at least 20 minutes
- Prolonged flushing/cooling is necessary

Eyes (Do NOT delay)

- Lay the person on their back
- Flush with running water for at least 20 minutes by allowing the water to flow over the bridge of the nose to the eyes

Urgent medical attention is required for burns to the face, eyes, hands, feet, genitalia and for circumferential or large burn areas.

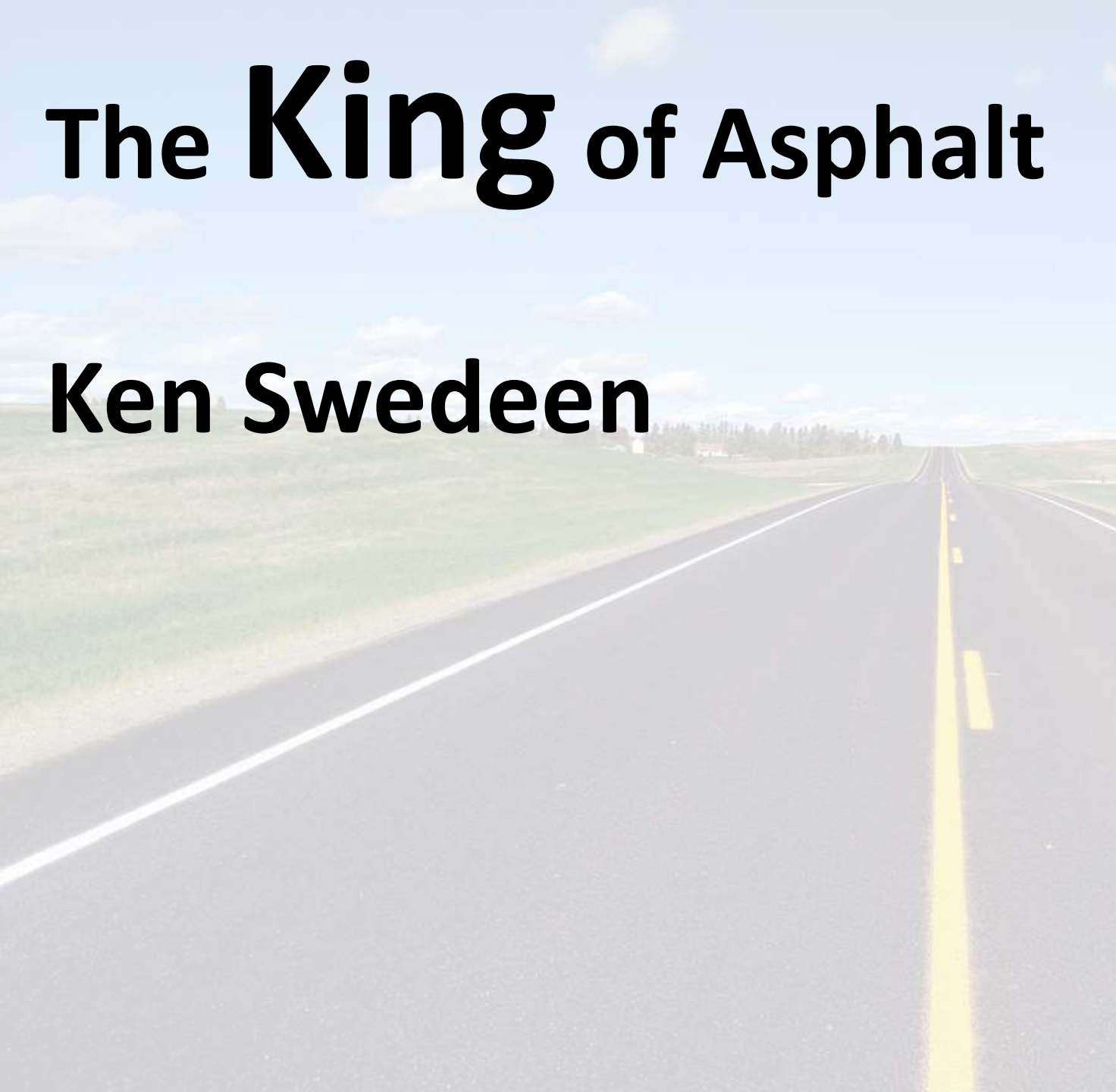
KEEP COOL

ON-SCENE FIRST AID FOR ASPHALT BURNS

- Immediately address any Airway, Breathing or Circulation concerns and **START COOLING**
- Do NOT remove asphalt from skin
- Leave burn uncovered
- Quickly place affected area under running/flowing water
- **Notify others**
- **Call for help #** _____

The **King** of Asphalt

Ken Swedeen



Tip from Ken Swedeen, The Dakota's Asphalt Expert - Roadresource.org

[Log In](#) [Sign Up](#)



Better roads today. Stronger networks tomorrow.

[ABOUT US](#)

[TREATMENT TOOLBOX](#)

[NETWORK OPTIMIZATION](#)

[PAVEMENT PRESERVATION](#)

[RECYCLING](#)

[EMULSIONS](#)

[RESOURCES](#)

Build A Better Network With the Optimized Approach



IMPROVE YOUR
OVERALL NETWORK
CONDITION



GET THE LOWEST
LIFE CYCLE COST
PER ROAD



MAXIMIZE
YOUR ECO
BENEFIT



WE LEAD AND INSPIRE WOMEN IN THE ASPHALT INDUSTRY.

MISSION STATEMENT

Women of Asphalt is a national coalition which supports women in all aspects of the asphalt industry through mentoring, education, and advocacy, and by encouraging women to seek careers in the asphalt industry.

VISION STATEMENT

We lead and inspire women in the asphalt industry.

GOALS

- To foster and promote mentoring and networking opportunities for women in asphalt
- To create professional development opportunities for women in asphalt through education and training
- To advocate for women in the asphalt industry
- To encourage other women to join the asphalt industry





North Dakota

RUSS HANSON

EXECUTIVE VICE PRESIDENT, AGC OF NORTH DAKOTA

The AGC of North Dakota

the unified voice





“Cracks need to be sealed, because where I come from water can’t jump.”
Tom Wood, Astech

Jerod Klabunde, PE – Project Manager, Moore Engineering
701-566-4289 – Jklabunde@mooreengineeringinc.com

Pavement Deterioration Video Clip
Copyright 2022 - Moore Engineering



Pavement Deterioration Video



BITS



TS

ON THE GROUND

NDSU | NDLTAP



For smoother roads and stronger bridges

March 2, 2023 by Adam Kurtz Published in: [College of Engineering & Mines](#), [Discovery](#), [Service](#)

Partnership with North Dakota DoT promises to help state develop, maintain modern transportation system



UND President Andrew Armacost and Ronald Henke, NDDOT director, sign the papers dedicating the partnership for the TTRI. Photo by Adam Kurtz/UND Today

TTRI

Transportation
Technology
Research Initiative

Daba Gedafa



Sattar Dorafshan, assistant professor of Civil Engineering and director of the TTRI, speaks at the Feb. 27 dedication event. Photo by Adam Kurtz/UND Today



REWARD CHAMP
MOTIVATION
SUCCESSFUL
WIN
HONOUR
TOP
ACHIEVEMENT
INSPIRING
SUCCEED
LEADERSHIP
VICTORY
BUSINESS
REWARD

SUCCEEDED

MOTIVATION
SUCCESS
REWARD
OPPORTUNITY
MOTIVATION
GOAL
QUALITY
MOTIVATION
TROPHY
WIN
CELEBRATION
PRIZE
CUP
WINNER
MOTIVATION
REWARD
FIRST
LEADER
CHAMPION
REWARD

Molly Barnes

Moderator Extraordinaire



Base Bid: 2017 Street Improvements - Chip Seal

Item	Description	Unit	Quantity	Estimated Unit Price	Estimated Total Price
1	General Requirements and Mobilization	L.S.	1	\$ 76,880.00	\$ 76,880.00
2	Traffic Control	L.S.	1	\$ 30,000.00	\$ 30,000.00
3	Bituminous Patching w/ 6" Aggregate	S.Y.	1,000	\$ 75.00	\$ 75,000.00
4	Crack Sealing	L.S.	1	\$120,000.00	\$ 120,000.00
5	CRS-2P Emulsified Asphalt (App. Rate - 0.42 gals/sy)	GAL.	75,600	\$ 2.30	\$ 173,880.00
6	Cover Coat Material CL 43 (App. Rate - 0.23 lbs/sy)	S.Y.	180,000	\$ 0.80	\$ 144,000.00
7	Fog Seal CSS-1H Emulsified Asphalt 50/50 (App. - 0.12 gals/sy)	GAL.	21,600	\$ 1.40	\$ 30,240.00
8	Miscellaneous Work	L.S.	1	\$ 10,000.00	\$ 10,000.00
				\$	-
					\$660,000.00



Compare Cost – Prelim. Estimate

- Scrub Seal more cost effective, by eliminating Crack-Seal



Alternate Bid: 2017 Street Improvements - Scrub Seal

	Description	Unit	Quantity	Estimated Unit Price	Estimated Total Price
1	General Requirements and Mobilization	L.S.	1	\$ 80,010.00	\$ 80,010.00
2	Traffic Control	L.S.	1	\$ 15,000.00	\$ 15,000.00
3	Bituminous Patching w/ 6" Aggregate	S.Y.	1,000	\$ 75.00	\$ 75,000.00
4	Cleaning Existing Cracks	S.Y.	180,000	\$ 0.05	\$ 9,000.00
5	PASS-CR Emulsified Asphalt (App. Rate - 0.41 gals/sy)	GAL.	73,800	\$ 3.75	\$ 276,750.00
6	Cover Coat Material CL 43 (App. Rate - 0.22 lbs/sy)	S.Y.	180,000	\$ 0.80	\$ 144,000.00
7	Fog Seal CSS-1H Emulsified Asphalt 50/50 (App. - 0.12 gals/sy)	GAL.	21,600	\$ 1.40	\$ 30,240.00
8	Miscellaneous Work	L.S.	1	\$ 10,000.00	\$ 10,000.00
				\$	-
				\$	-
					\$640,000.00

Meet the Team



Gerard Feist
NDLTAP Asphalt Expert



Jody Jones
NDLTAP Admin Tech



Tom Wood
Astech – Asphalt Expert



Denise Brown
NDLTAP Program
Manager

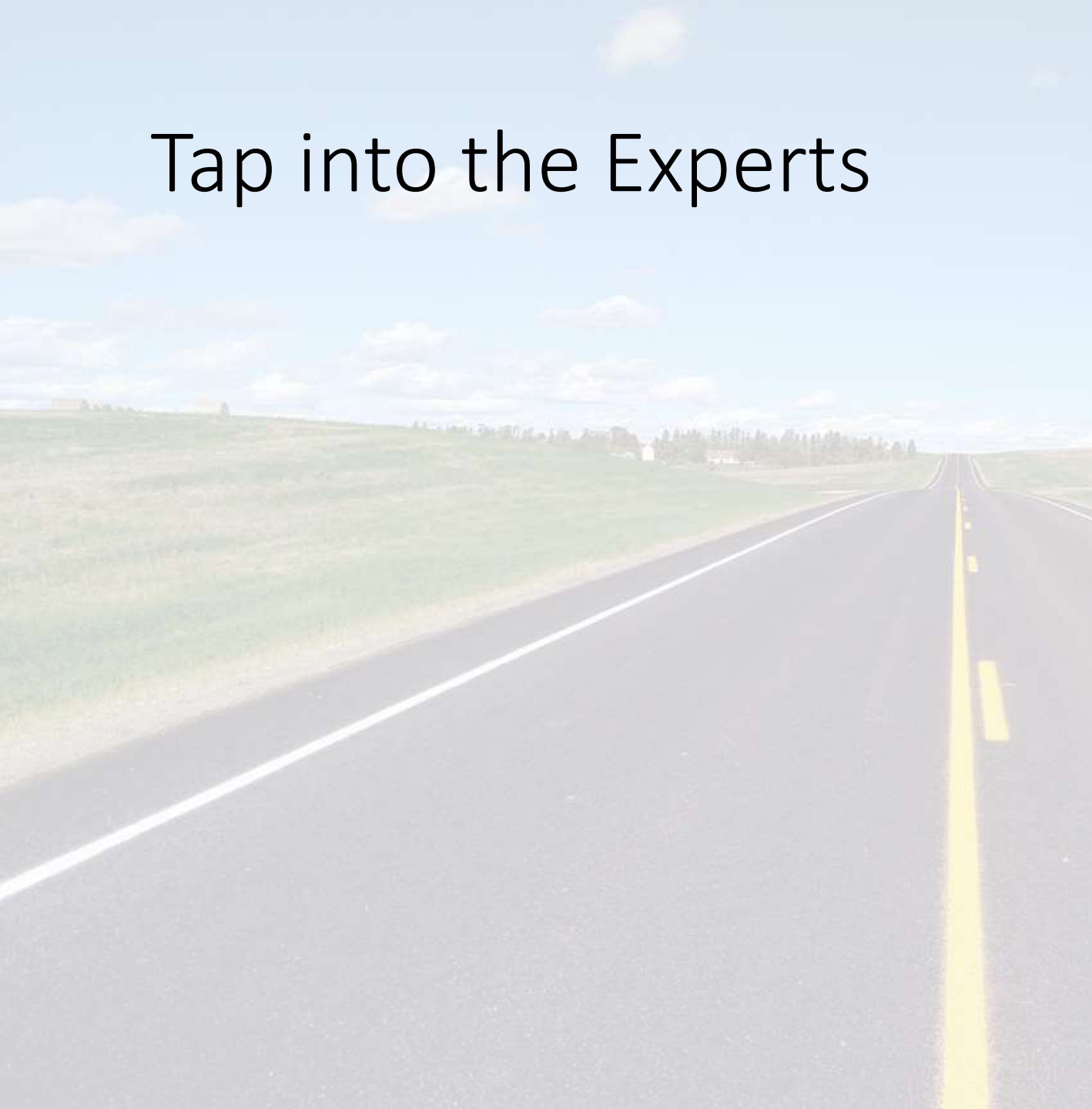


Rodney Ness
Swantson – Equipment
Expert



Dale Heglund
NDLTAP Director

Tap into the Experts



Old School to.....



NRRRA

National Road Research Alliance

Strategic Implementation Through
Cooperative Pavement Research

Proud Member of the
National Road Research Alliance
Presented to
Upper Great Plains
Transportation Institute
2018



Celebrate

