

2023 ND Asphalt Conference

US-52 Corridor – Passing Lane Construction

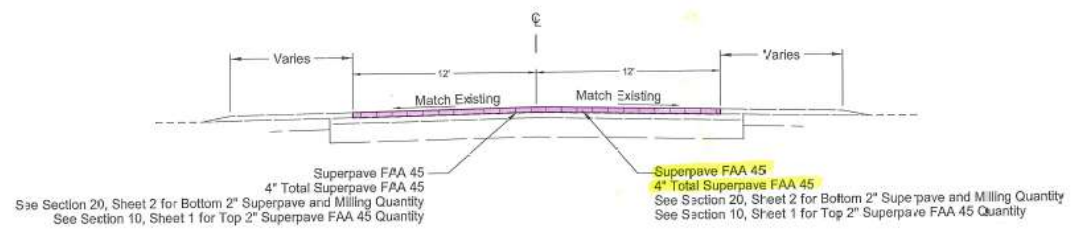
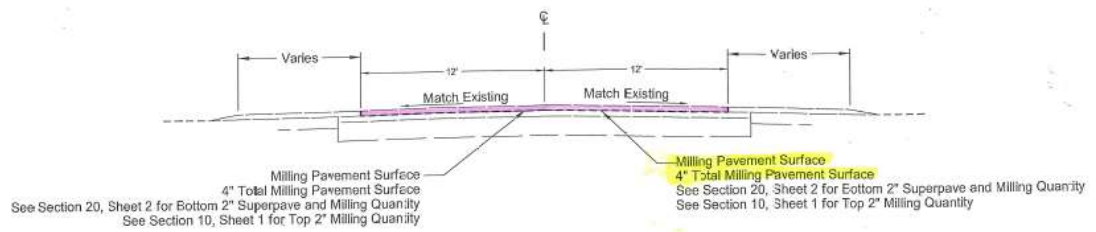
MAYO CONSTRUCTION COMPANY, INC.







STATE	PROJECT NO.	SECTION NO.	SHEET NO.
ND	NH-3-052(055)198	20	2



LOCATION	BEGIN STATION	END STATION	LENGTH (FT)	WIDTH, LANE (FT)	AREA (SY)	MILLING PAVEMENT SURFACE (TON)	SUPERPAVE FAA 45 @ 2 TON/CY (TON)	PG 584-34 ASPHALT CEMENT @ 6.0% of HBP (TON)	TACK COAT @ 0.05 GAL/SY (GAL)
Mainline	10739+55	10757+23	1,768	12 WB	2,357	262	262	16	118
Mainline	10879+93	11153+60	27,367	12 WB	36,489	4,054	4,054	243	1824
Mainline	11287+87	11598+12	31,025	12 WB	41,367	4,596	4,596	276	2068
Mainline	10536+37	11210+57	67,420	12 EB	89,893	9,988	9,988	599	4495
Total			127,580		170,107	18,901	18,901	1,134	8,505

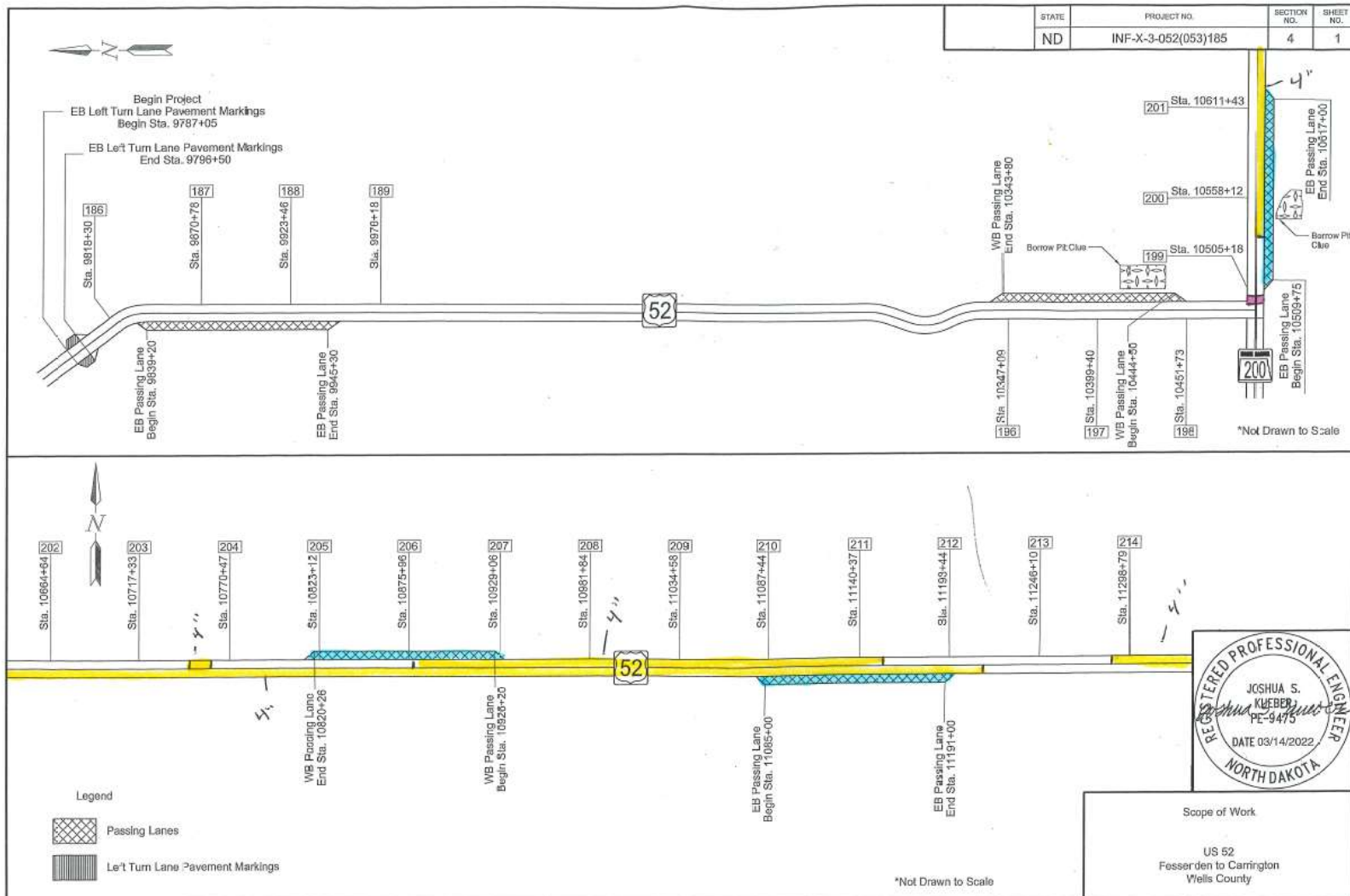
32.7 Miles (Lane)



4" Superpave and Milling Detail



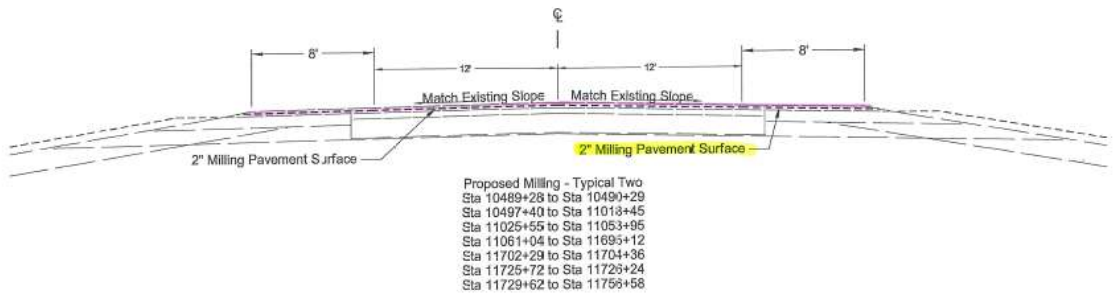
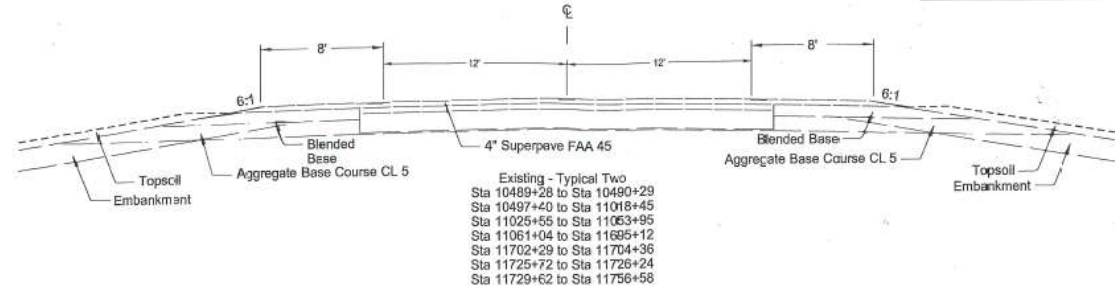
2





3

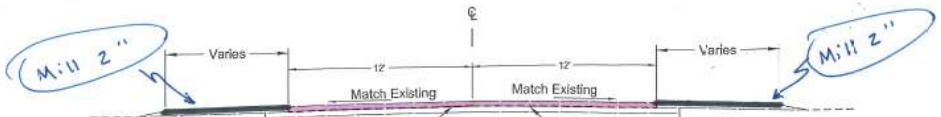
STATE	PROJECT NO.	SECTION NO.	SHEET NO.
ND	NH-3-052(055)198	30	2



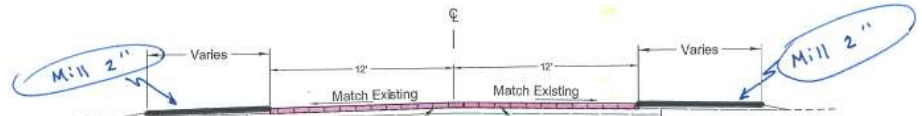
Existing & Proposed
 Typical Sections

4

STATE	PROJECT NO.	SECTION NO.	SHEET NO.
ND	NH-3-052(055)198	20	2



Milling Pavement Surface
4" Total Milling Pavement Surface
See Section 20, Sheet 2 for Bottom 2" Superpave and Milling Quantity
See Section 10, Sheet 1 for Top 2" Milling Quantity



Superpave FAA 45
4" Total Superpave FAA 45
See Section 20, Sheet 2 for Bottom 2" Superpave and Milling Quantity
See Section 10, Sheet 1 for Top 2" Superpave FAA 45 Quantity

BOTTOM 2" SUPERPAVE & MILLING TABLE									
LOCATION	BEGIN STATION	END STATION	LENGTH (FT)	WIDTH, LADE (FT)	AREA (SY)	MILLING PAVEMENT SURFACE (TON)	SUPERPAVE FAA 45 @ 2 TON/CY (TON)	PG 584-34 ASPHALT CEMENT @ 6.0% of HBP (TON)	TACK COAT @ 0.05 GAL/SY (GAL)
Mainline	10739+55	10757+23	1,768	12 WB	2,357	252	252	16	118
Mainline	10879+93	11153+60	27,267	12 WB	35,489	4,054	4,054	243	1824
Mainline	11287+87	11598+12	31,025	12 WB	41,367	4,536	4,536	276	2068
Mainline	10536+37	11210+57	67,420	12 EB	89,893	9,938	9,938	599	4495
	Total		127,580		170,207	18,901	18,901	1,134	8,505

32.7 Miles (Lane)



4" Superpave and Milling Detail







PROJECTS INF-X-3-052(053)185, NH-3-052(054)185 & NH-3-052(055)198
US HWY 52 - FESSENDEN TO CARRINGTON (37 MILES)

BID MAY 13, 2022

TRUCKING NEEDS

BID ITEM	QUANITTY	UNIT
Borrow - Excavation	90,697	CY
Water	4,287	MGAL
Aggregate Base Course, CI 5	139,438	TON
Milling Pavement Surface	130,693	TON
Superpave FAA 45	166,818	TON
TOTAL ~	600,000	TON

NORTH DAKOTA DEPARTMENT OF TRANSPORTATION FLEXIBLE PAVEMENT RIDE QUALITY

PROJECT	TYPE	IRI	
		AVERAGE	
23151	PASSING LANES	35.1	
23377	2" MILL & OVERLAY	39.6	
23580	2"-4" MILL & OVERLAY	33.6	
			RANGE INC/CPA
			<=34.0 \$ 300.00
			34.1 to 39.0 \$ 225.00
			39.1 to 44.0 \$ 150.00
			44.1 to 48.0 \$ 75.00
			48.1 to 56.0 \$ -
			56.1 to 62.0 \$ (100.00)
			62.1 to 69.0 \$ (200.00)
			69.1 to 75.0 \$ (400.00)
			>=75.1 Corr Action



NDSU
ROLLIN' THUNDER

NDSU

