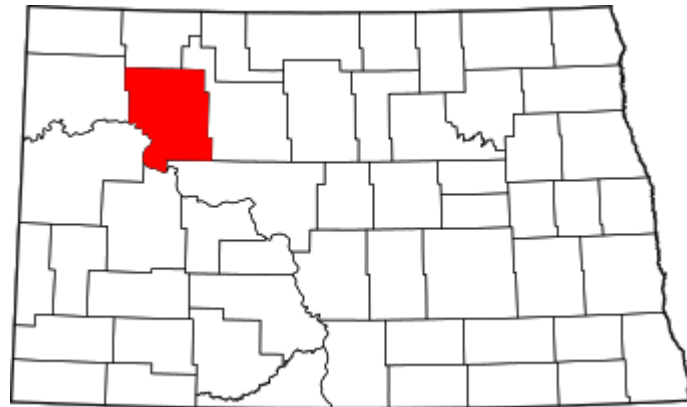


# High Friction Surface Treatment

Jana Hennessy

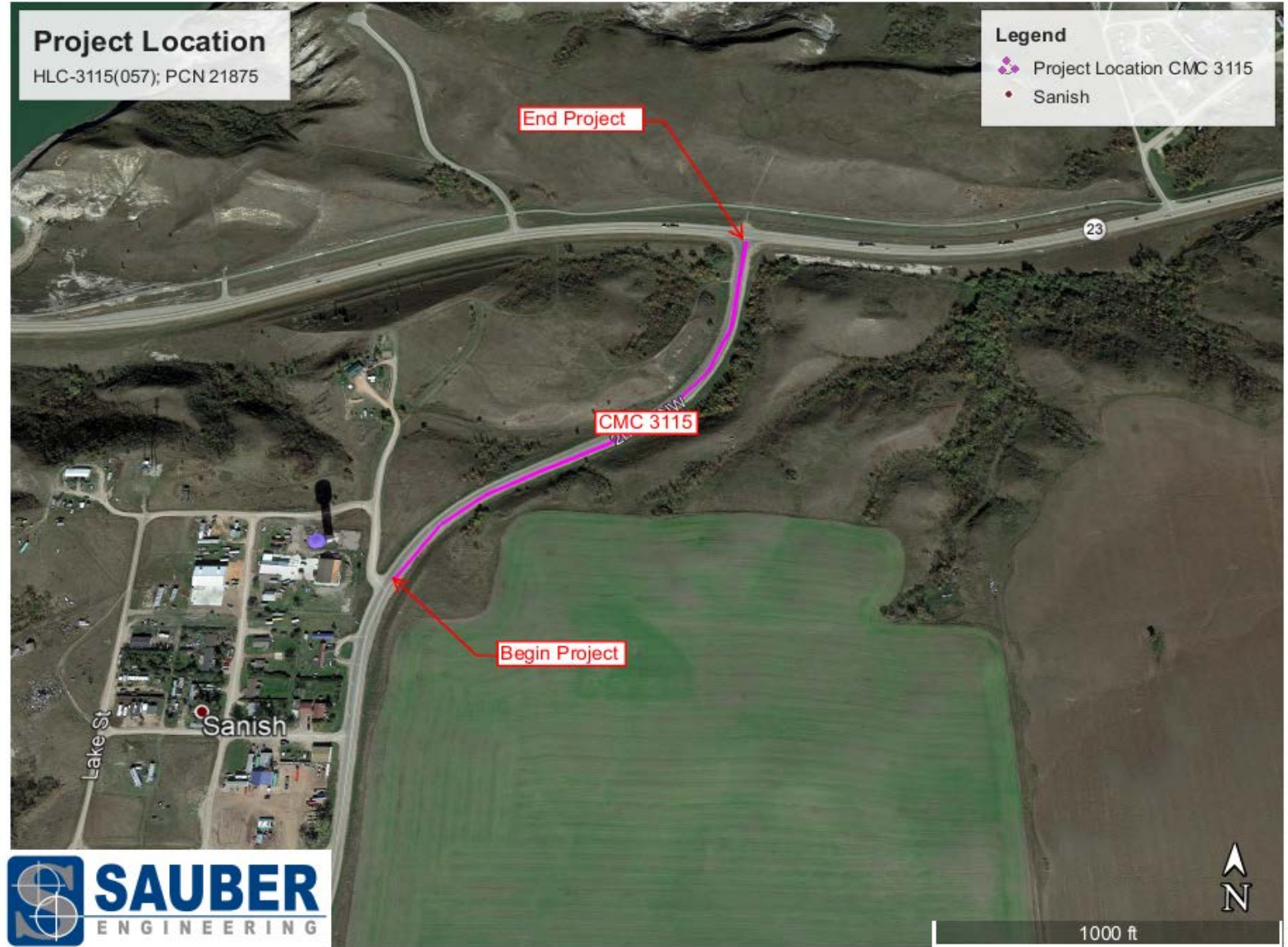
Mountrail County Engineer



This project is located on County Road 21 in Mountrail County ND near lake Sakakawea.

The project is on a north facing hill side that approaches a stop situation on ND HWY 23 at 9% grade.

This hill, which is approximately ½ mile long, experiences extreme icy conditions much of the winter season. The Road Department treats this area with traditional salt and sand mix application on a regular basis with very little results.



The roadway passes through US Army Corp of Engineers land on the Fort Berthold Indian Reservation.

The hill is very steep and heavily populated with trees preventing any sunlight exposure.

This roadway is well traveled (with ADT of 1520 vehicles per day and up to 700 truck per day).

Combined, the steep grade and ice create a very dangerous condition that has resulted in several crashes and numerous near misses.



We wanted to improve the safety situation on this hill and since the traditional treatment wasn't very successful we wanted to try something else – **High Friction Surface Treatment.**

With the help of the NDDOT we were able to apply for safety funds and utilize County Federal Aid.

Mountrail County will be the first on in the State of North Dakota to pioneer the High Friction Surface Treatment.

Our team is excited to try something new and hopefully next year we will be able to report how the project went and how it preformed over the winter.



# Alabama Sample – Calcined Bauxite Aggregate



# National County Engineers Conference – HFST 2018 Demo



# Contact Information:

Jana Hennessy

Email: [janah@co.mountrail.nd.us](mailto:janah@co.mountrail.nd.us)

Website: <http://www.co.mountrail.nd.us/road.html>

Phone: (701) 628-2390