

LEARN • EVOLVE • IMPLEMENT

NORTH DAKOTA ASPHALT CONFERENCE

APRIL 3-4, 2019 (WED-THURS) • RAMADA BISMARCK HOTEL

Welcome

North Dakota
ASPHALT
conference

NDSU | UPPER GREAT PLAINS TRANSPORTATION INSTITUTE
NORTH DAKOTA LOCAL TECHNICAL ASSISTANCE PROGRAM



LEARN EVOLVE IMPLEMENT

North Dakota Asphalt Conference

Bismarck, ND - April 3-4, 2019

A large crowd of people is gathered on a street, holding numerous Norwegian flags. The scene is festive and celebratory, likely during a parade or festival. The flags are predominantly red, white, and blue, with a red cross. The crowd is dense, filling the street from the foreground into the distance. The background shows a clear blue sky and some greenery.

**EVERYONE IS A
LITTLE IRISH
ON ST. PATRICK'S DAY**

I love my norwegian heritage

**EXCEPT THE
NORWEGIANS.
WE ARE STILL NORWEGIAN.**

Mr Asphalt
Ken Swendeen

Interstate 94 Medina

Owner: North Dakota Department of Transportation
Contractor: Northern Improvement Company



Ken's Tip - Roadresource.org



[Log In](#) [Sign Up](#)

Better roads today. Stronger networks tomorrow.

[ABOUT US](#)

[TREATMENT TOOLBOX](#)

[NETWORK OPTIMIZATION](#)

[PAVEMENT PRESERVATION](#)

[RECYCLING](#)

[EMULSIONS](#)

[RESOURCES](#)

Build A Better Network With the Optimized Approach



IMPROVE YOUR
OVERALL NETWORK
CONDITION



GET THE LOWEST
LIFE CYCLE COST
PER ROAD



MAXIMIZE
YOUR ECO
BENEFIT

2019 CON

- Amy Beise
- Denise Brown
- Carey Burke
- Curt Dunn
- David Ferrell
- Bryon Fuchs
- Daba Gedafa
- Dale Heglund
- Mark Hendrickson
- Jeremy Holt
- Tim Horner
- Matt Linneman
- Ryan Lynch
- Michael Mart
- Dennis Nelson
- Chris Padilla
- Justin Ramsey
- Mike Rivinius
- Clayton Schumaker
- Mike Kisse
- Ken Swedeen
- Nabil Suleiman
- Stephanie Weigel
- Andrew Wrucke



Conference Steering Committee

Sponsors – Thank You

PLATINUM SPONSORS (\$1,000+)



Boulder Products & Services
FLINT HILLS RESOURCES*
RDO. EQUIPMENT CO.
Wold Engineering, Inc. *60 Years of Service*
Consulting Engineers & Land Surveyors

SILVER SPONSORS (\$500-\$749)



ACKERMAN ESTVOLD **Apex Engineering Group** **Bartlett & West**
Brosz **Butler CAT** **CENTRAL SPECIALTIES INC** **CHS**
EVO THERM **Ingevity** **HOUSTON ENGINEERING INC.** **INTERSTATE ENGINEERING** **KNIFE RIVER**
CAVALIER PRORE MAYO **Northern IMPROVEMENT CO.** **Tensar** **Ulteig**

BRONZE SPONSORS (\$100-\$499)



BORDER STATES PAVING INC. **Industrial Builders**
moore engineering, inc. **SITECH** **SRH**
Terracon **Unique Paving Materials Corp.**
The makers of UPM™ mix



**FIRST TIME
ATTENDEE**



NDDOT/FHWA

33%



23%

**CONSULTING/
ACADEMIA**



**LOCAL
GOVERNMENTS**

17%



26%

**CONTRACTORS/
SUPPLIERS**

Levi Heller, Apex Engineering

Mayo Construction Project



LEARN EVOLVE IMPLEMENT



Photo Highlights



photo credit: Chad Beggs, NDDOT, Minot District



photo credit: Gary Brennan, Brosz Engineering



photo credit: Sharon Lipsh, Walsh County



photo credit: Scott Whaley, Tensar



photo credit: Kristi Nicholson, Apex Engineering Group



photo credit: Sharon Lipsh, Walsh County



photo credit: Kristi Nicholson, Apex Engineering Group

Gerard Feist
Asphalt Consultant

North Dakota Local Technical Assistance Program

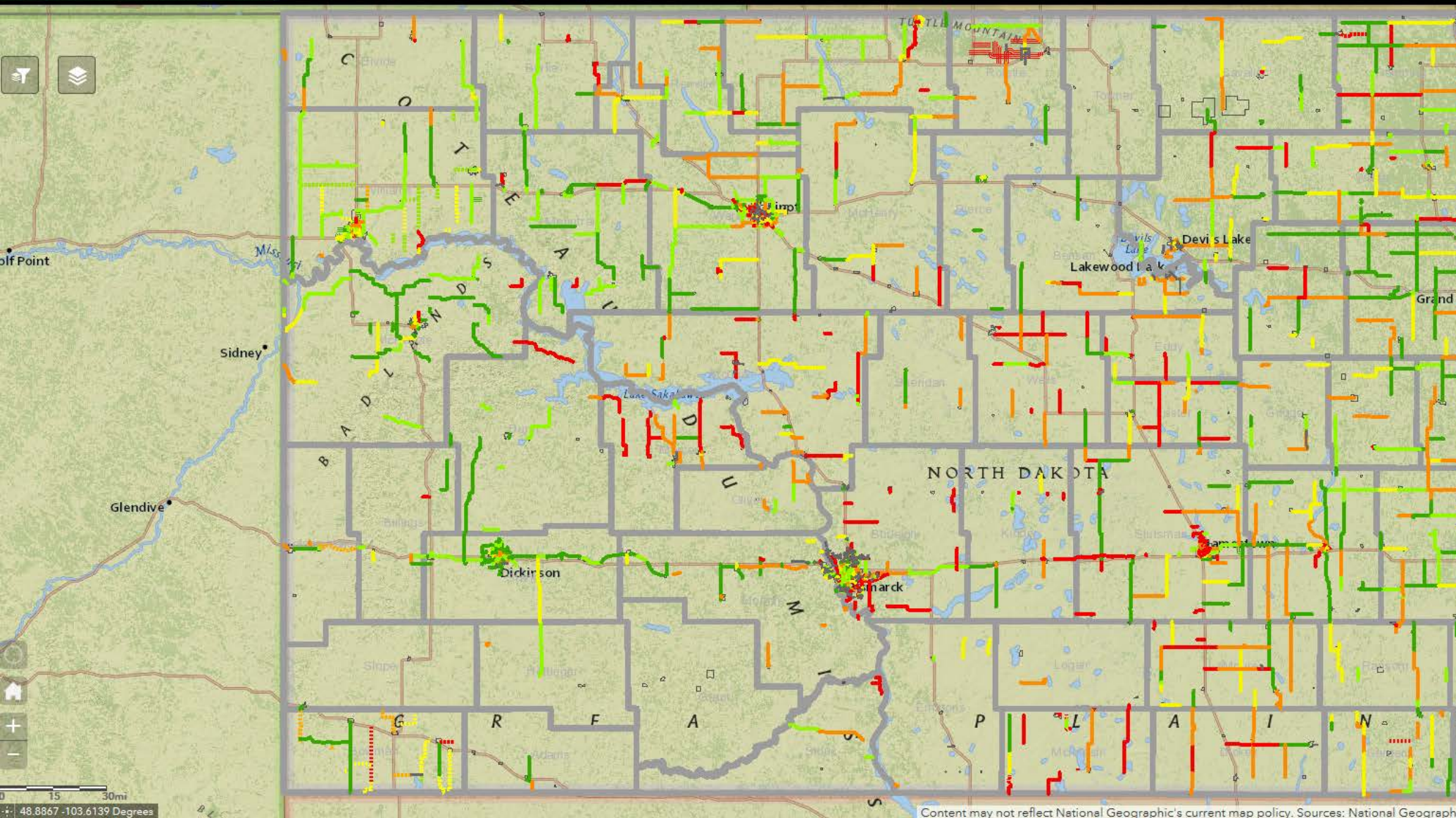
gjfeist2@gmail.com
701-595-2017

Bismarck
ndltap.org



Demos
Ride Quality Awards
UND Research Posters





Legend

****CONSTRUCTION HISTORY ALL****

Pavement Age (Bituminous)

- 0 - 5
- 6 - 10
- 11 - 15
- 16 - 25
- 26 - 150
- Not Available

Pavement Age (Concrete)

- 1 - 10
- 11 - 20
- 21 - 25
- 26 - 35
- 36 - 150
- Not Available

Pavement Age (AST)

- 0 to 2
- 3 - 4
- 5 - 6
- 7 - 8
- 9 and older
- Not Available

STATE BASE MAP

- MunicipalBoundary
- County



Evaluations – Favorite Quote

“Cracks need to be sealed, because where I come from water can’t jump.”,
Tom Wood,
MnDOT/WSB



Dakota Asphalt Pavement Association, Inc.

"Dedicated to Quality Asphalt Paving Through Engineering, Research, and Education"

ASPHALT conference

NDSU

UPPER GREAT PLAINS
TRANSPORTATION INSTITUTE
NORTH DAKOTA LOCAL TECHNICAL ASSISTANCE PROGRAM



photo credit: Justin Hyndman, PE.