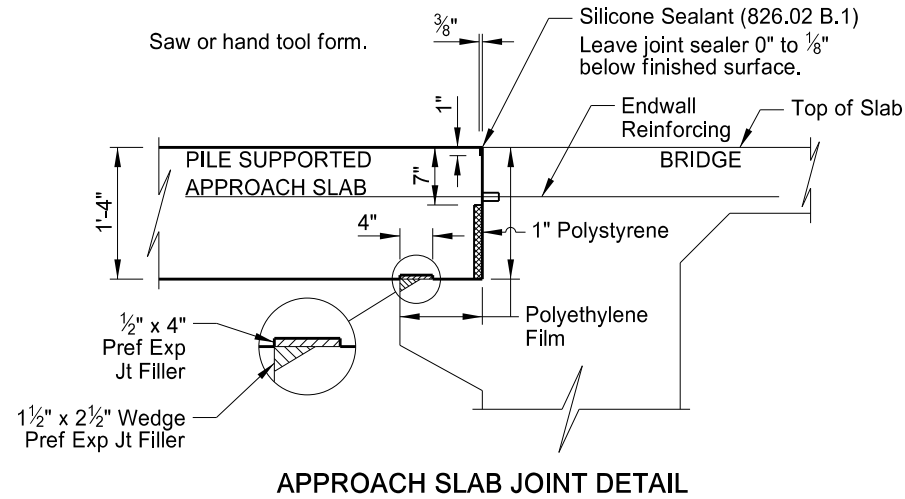


STATE	PROJECT NUMBER	SECTION NO.	SHEET NO.
ND	BND-IM-1-094(192)164	170	20



**NOTES:**

The estimated material quantities shown are for information purposes only. Include the concrete, reinforcing bars, polyethylene film, preformed joint filler, polystyrene, silicone sealant, connection plates and pipes, and labor required to build the approach slabs and barriers in the pay item "Pile Supported Approach Slab." Use Class AE-3 concrete and Grade 60 reinforcing steel. Provide reinforcing steel that meets the requirements of Section 612. Use polyethylene film that meets the requirements of ASTM C171.

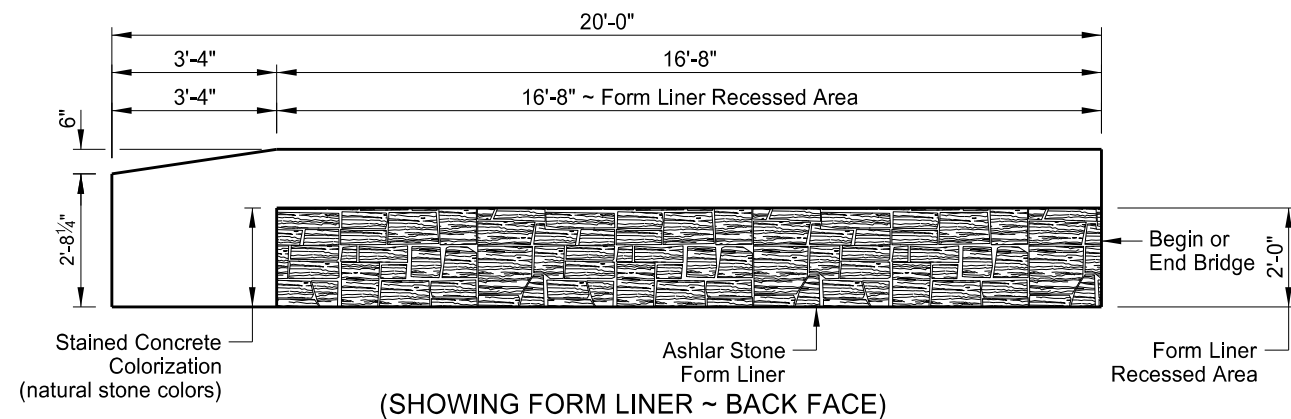
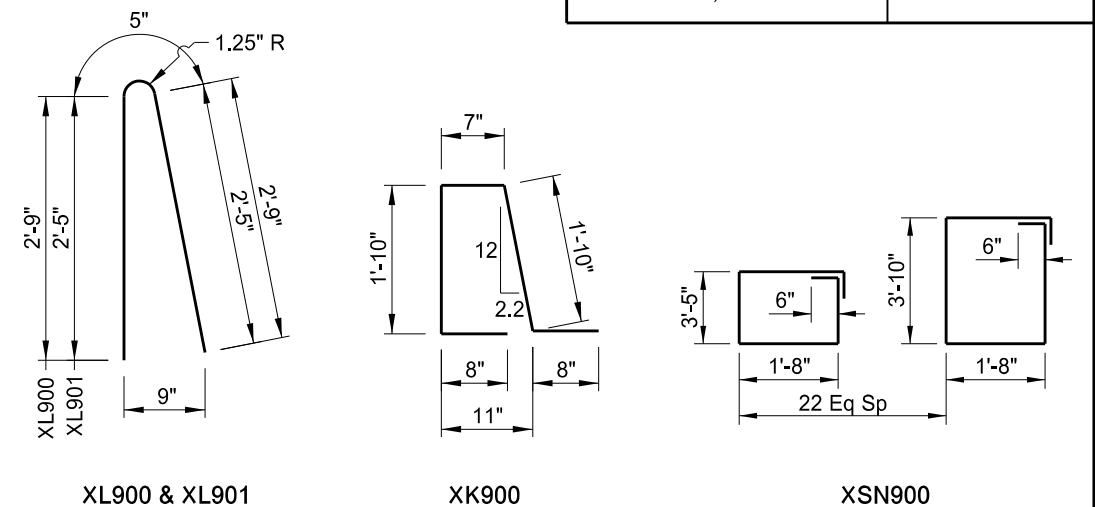
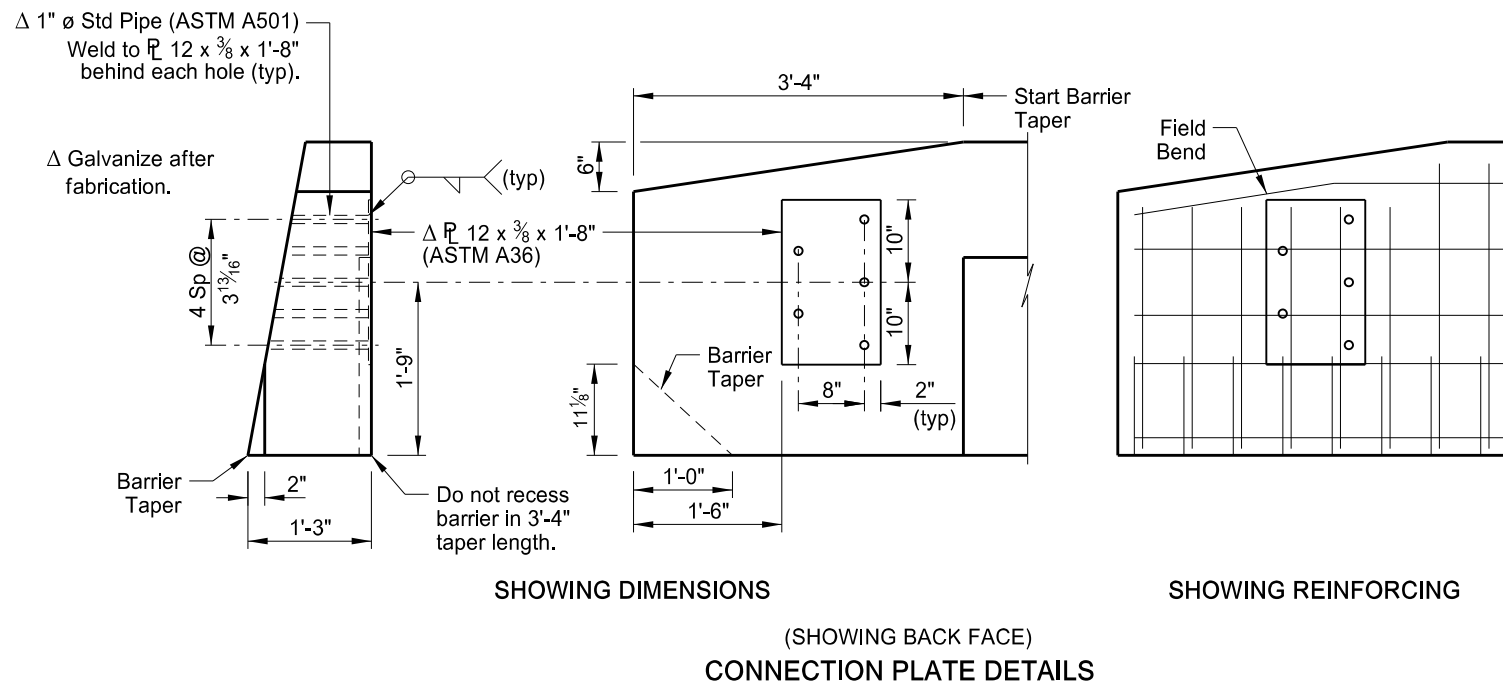
The bar marks beginning with an "X" indicate an epoxy coated bar. The dimensions shown in the "Bent Bar Details" are out to out.

SKEW ANGLE = 0°

BAR LIST - ONE SLAB			
SIZE	MARK	NO.	LENGTH
7	XA900	93	19'-8"
5	XA901	47	19'-8"
5	XA902	36	46'-2"
4	XA903	18	19'-8"
4	XA904	4	3'-0"
4	XA905	8	46'-2"
6	XA906	8	46'-2"
5	XK900	80	5'-7"
5	XL900	66	5'-11"
5	XL901	14	5'-3"
5	XSN900	2	266'-5"

**ESTIMATED MATERIAL QUANTITIES**

REINFORCING STEEL (LBS)	CONCRETE (CY)
8,988	60.1



This drawing is preliminary and not for construction or implementation purposes.

QUANTITIES (ONE SLAB)	
APPROACH SLAB	103.3 SY
GIBBS TOWNSHIP SEPARATION	
APPROACH SLAB DETAILS	