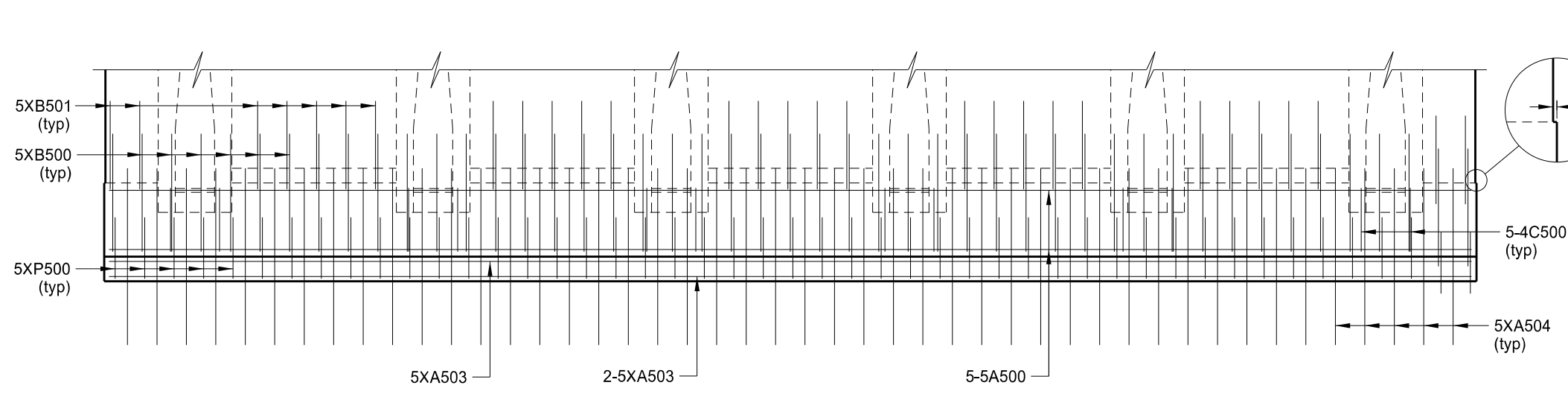
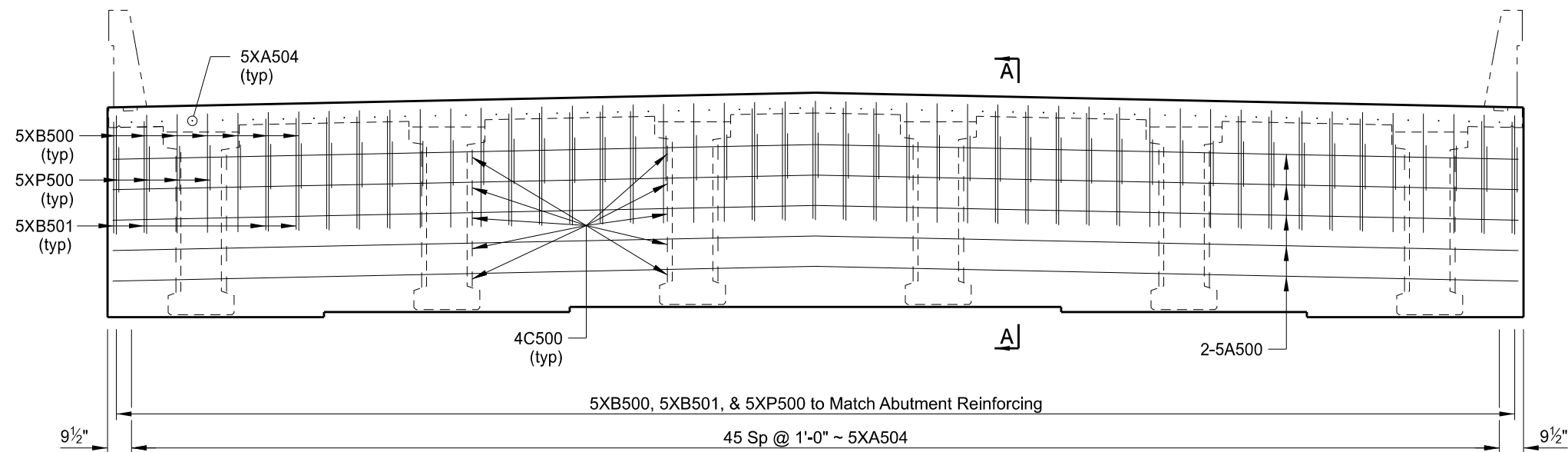


STATE	PROJECT NUMBER	SECTION NO.	SHEET NO.
ND	BND-IM-1-094(192)164	170	15

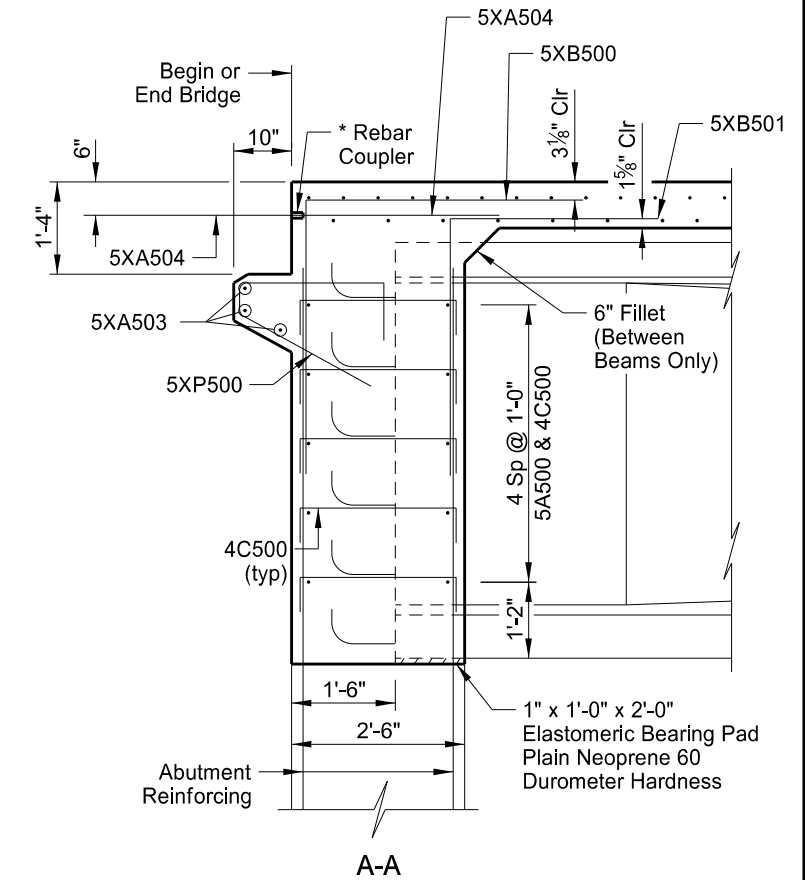


PLAN



(APPROACH LIP NOT SHOWN)

ELEVATION



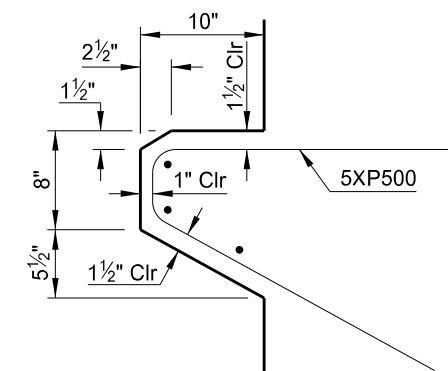
A-A

* Use approved mechanical connectors for the couplers capable of developing 125% of the reinforcing steel specified yield strength. Provide epoxy coated couplers according to Section 836.02 A and repair any damaged epoxy coating according to Section 612.04 E.

NOTES:

Do not install the 5XA504 bars into the approach slab until all of the foundation fill is in place.

Position the 4'-0" leg of 5XB500 bar and the 3'-0" leg of 5XB501 bar horizontal.



APPROACH LIP DETAIL

This drawing is preliminary and not for construction or implementation purposes.

QUANTITIES
SEE DWG 94-164.515-16
GIBBS TOWNSHIP SEPARATION
ENDWALL DETAILS