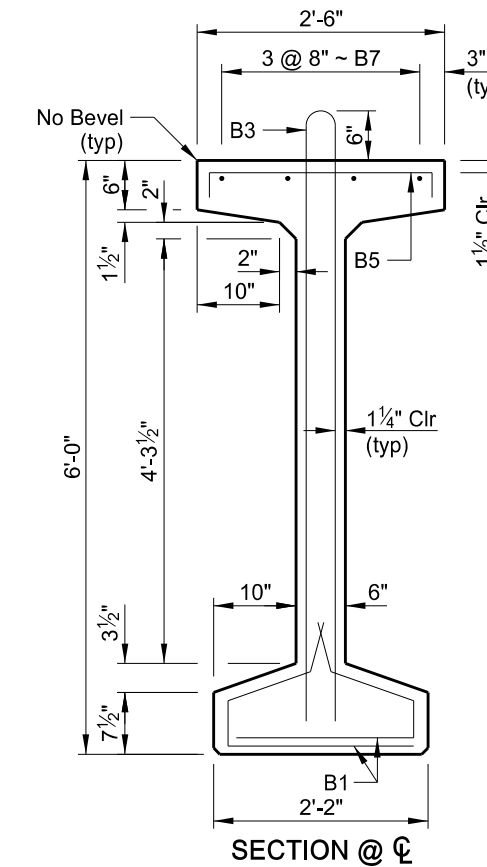
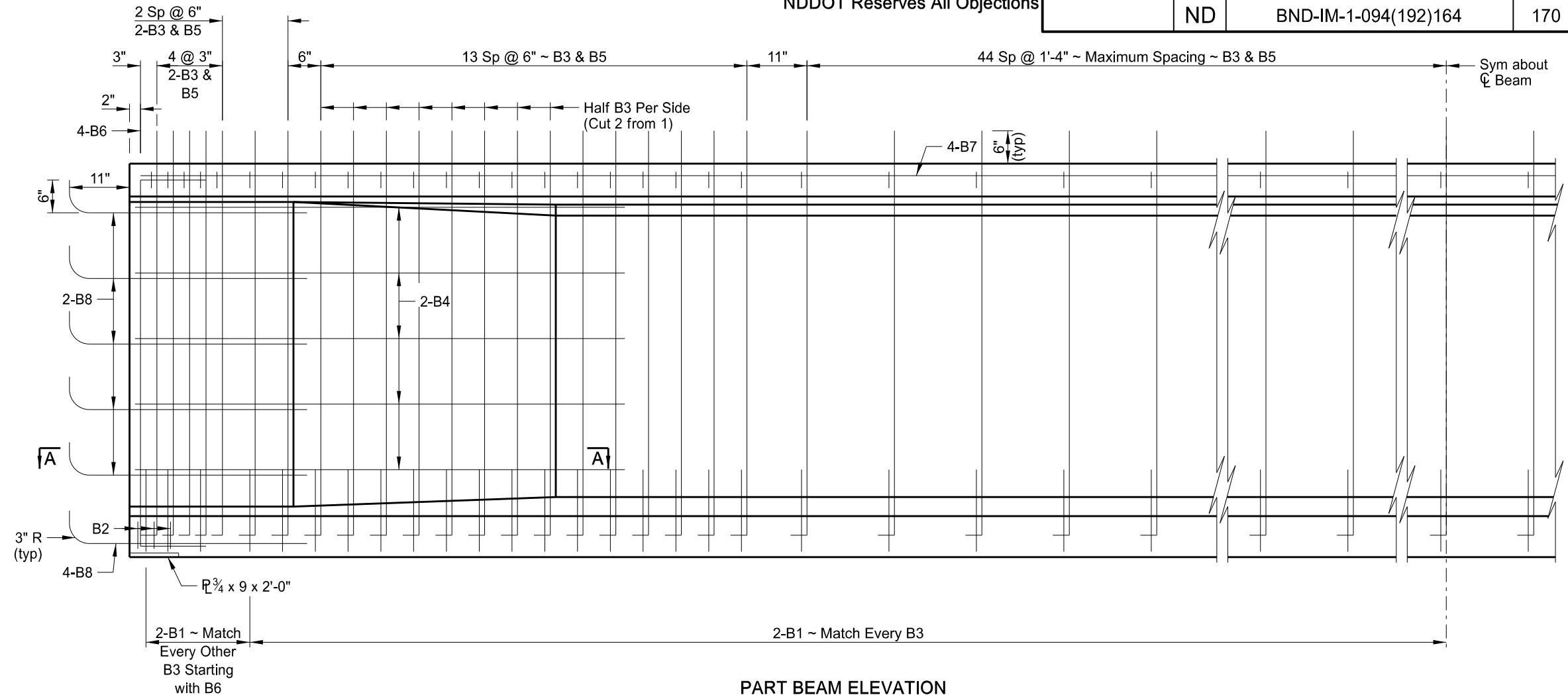


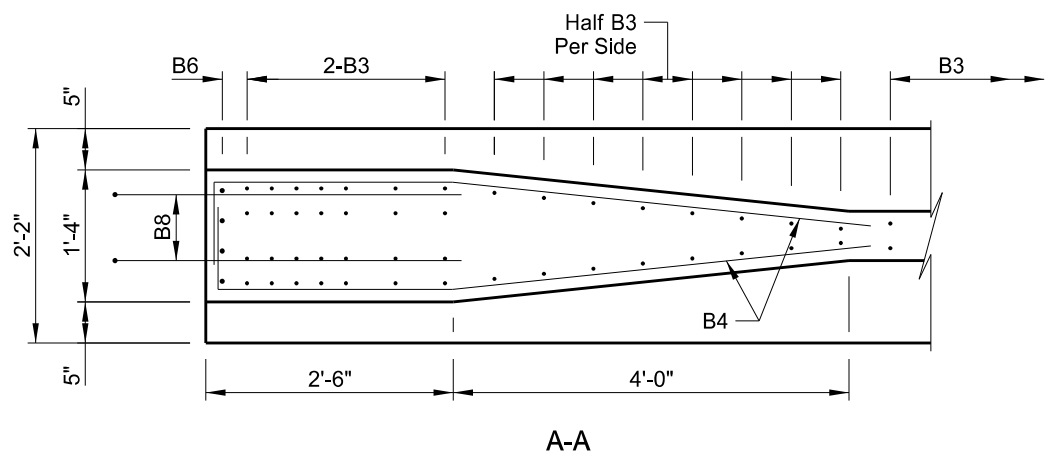
(DETAILS NOT SHOWN ARE SAME AS "SECTION @ ϕ ")
END VIEW



SECTION @ ϕ



PART BEAM ELEVATION



A-A

BEAM SECTION DATA	
WT =	846.0 LBS/FT + 5239 LBS FOR END BLOCKS
CROSS SECTIONAL AREA AT ϕ SPAN =	786 IN ²
C.G. (FROM BOTTOM) =	35.60 IN
I =	547,922 IN ⁴
S _B =	15,391 IN ³
END AREA =	1326.75 IN ²

BAR LIST ~ ONE BEAM				
MARK	SIZE	NO.	LENGTH	SHAPE
B1	4	254	3'-9"	BENT
B2	5	6	2'-6"	BENT
B3	4	145	13'-0"	BENT
B4	4	20	7'-5"	BENT
B5	3	131	2'-9"	BENT
B6	5	8	7'-8"	BENT
B7	5	20	30'-0"	STR
B8	5	28	4'-0"	STR

* Field bend as shown (Grade 40).

QUANTITIES (ONE BEAM)	
BEAM LENGTH	138.0 LF
GIBBS TOWNSHIP SEPARATION	
PRE-TENSIONED 72" PRESTRESSED I-BEAM	

This drawing is preliminary and not for construction or implementation purposes.