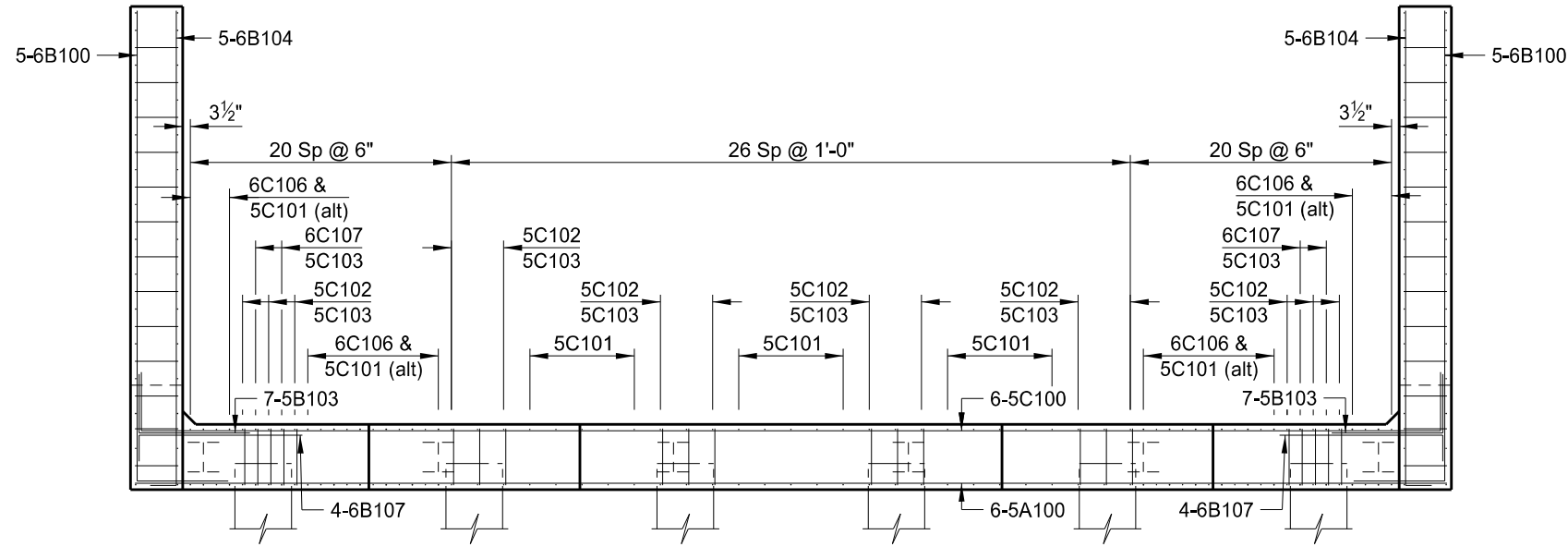


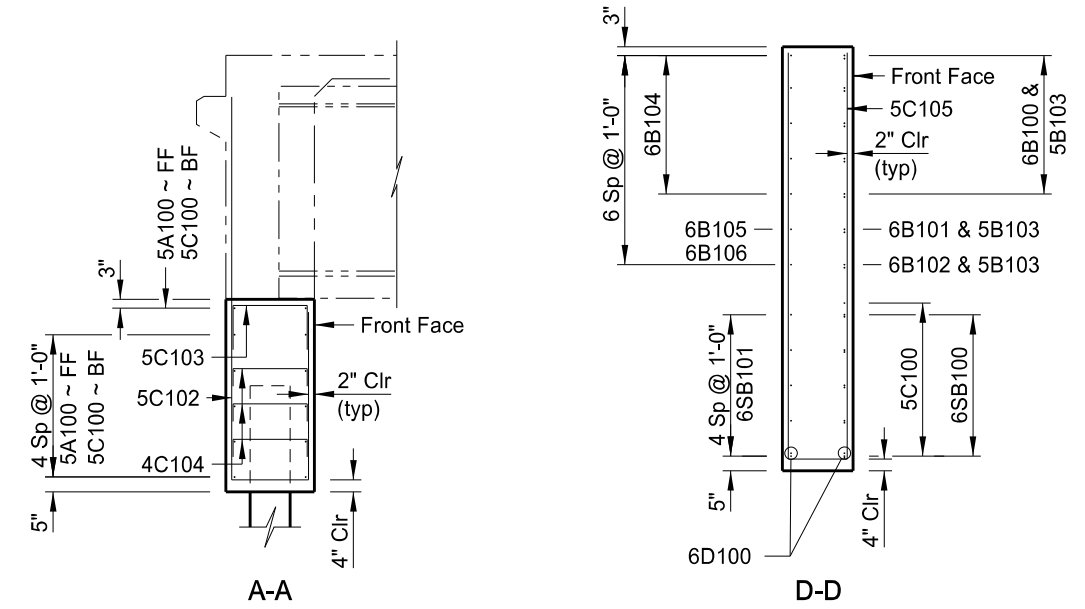
STATE	PROJECT NUMBER	SECTION NO.	SHEET NO.
ND	BND-IM-1-094(192)164	170	8

NOTE:

Position the long leg of 5B103 bar perpendicular to abutment wing.

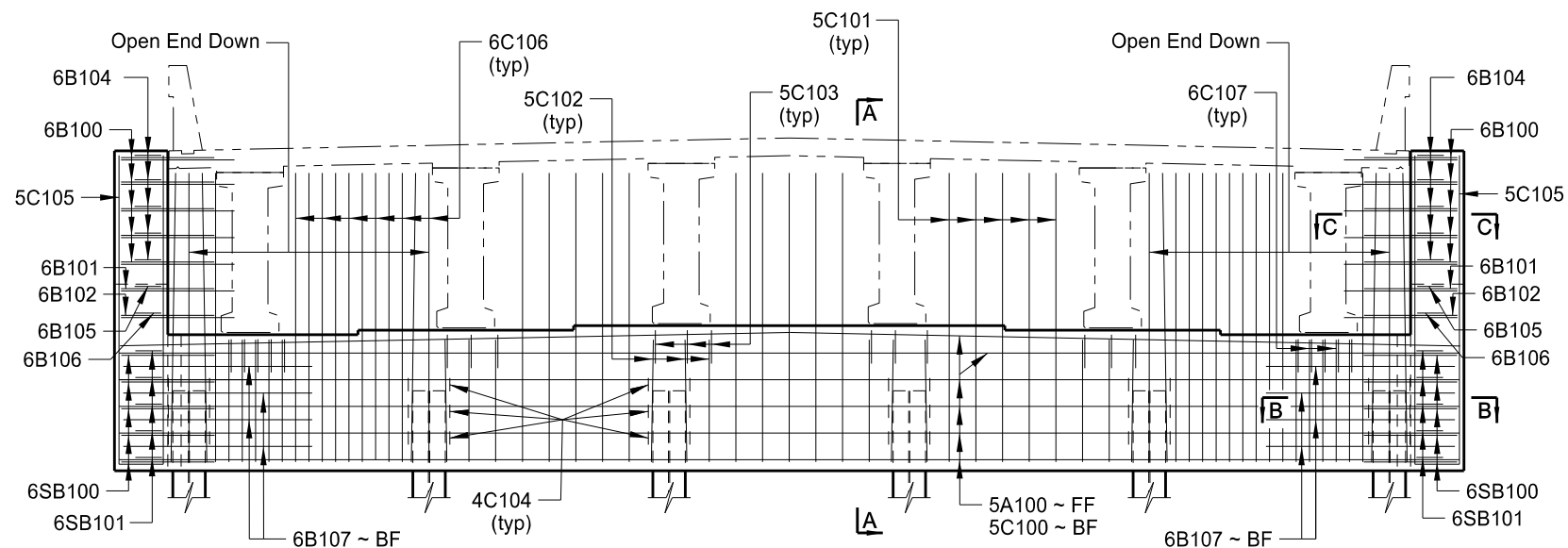


PLAN

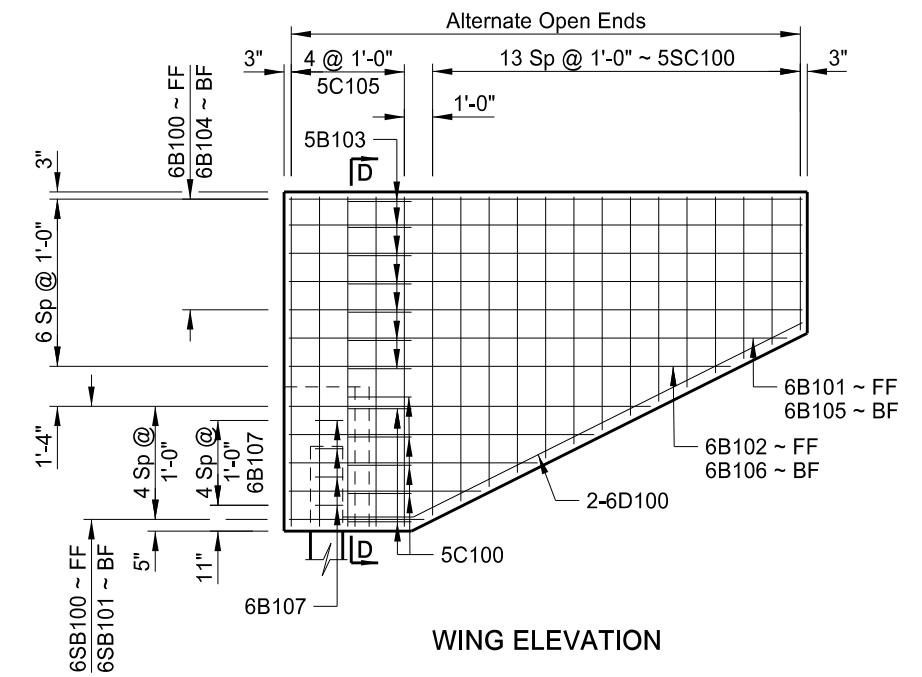


A-A

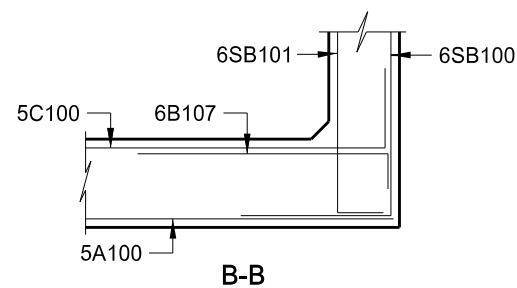
D-D



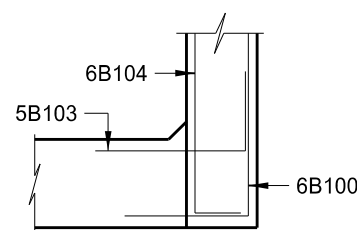
ELEVATION



WING ELEVATION



B-B



C-C

NOMENCLATURE:

FF = Front Face
BF = Back Face

This drawing is preliminary and not for construction or implementation purposes.

QUANTITIES	(ONE ABUTMENT)
CLASS AE-3 CONCRETE	48.4 CY
REINFORCING STEEL	4,780 LBS

GIBBS TOWNSHIP SEPARATION
(SHOWING REINFORCING)
ABUTMENT DETAILS