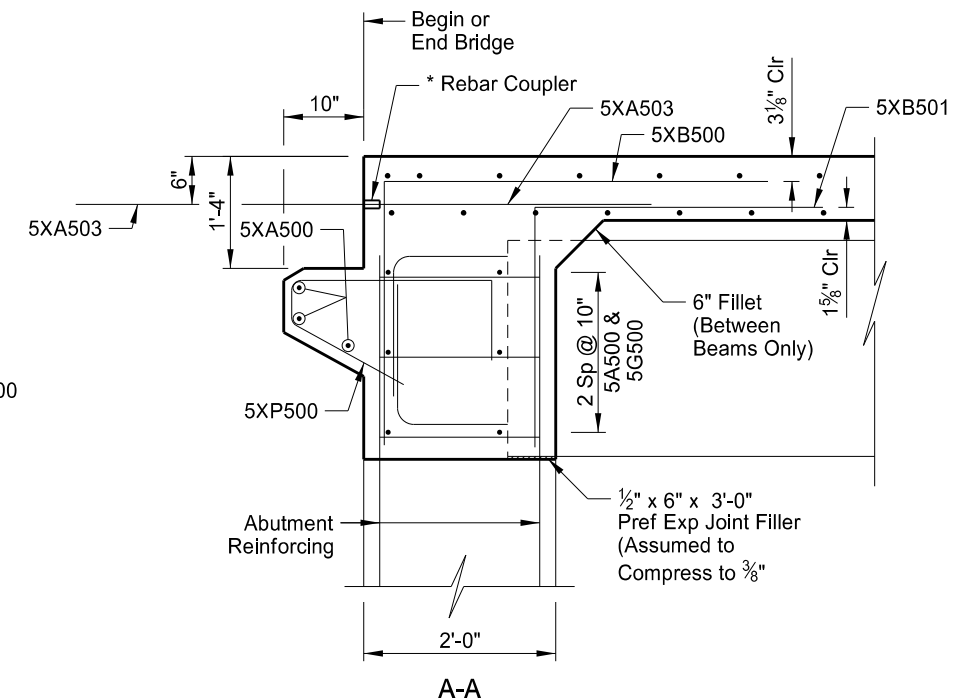
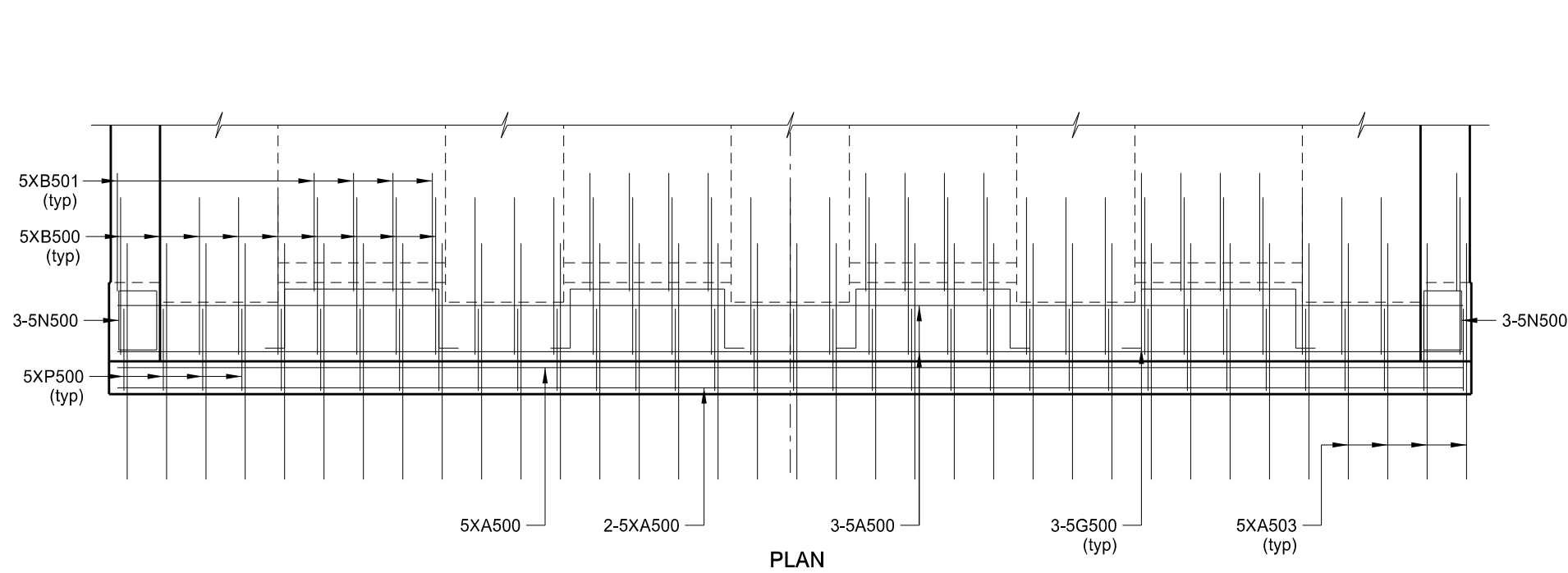


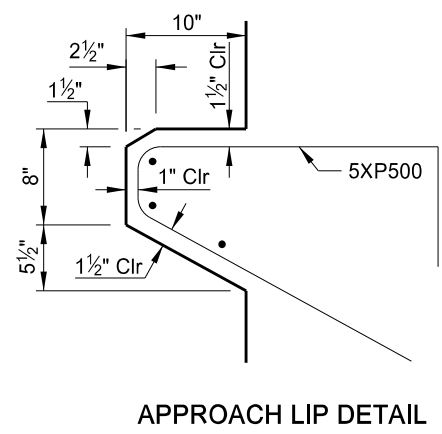
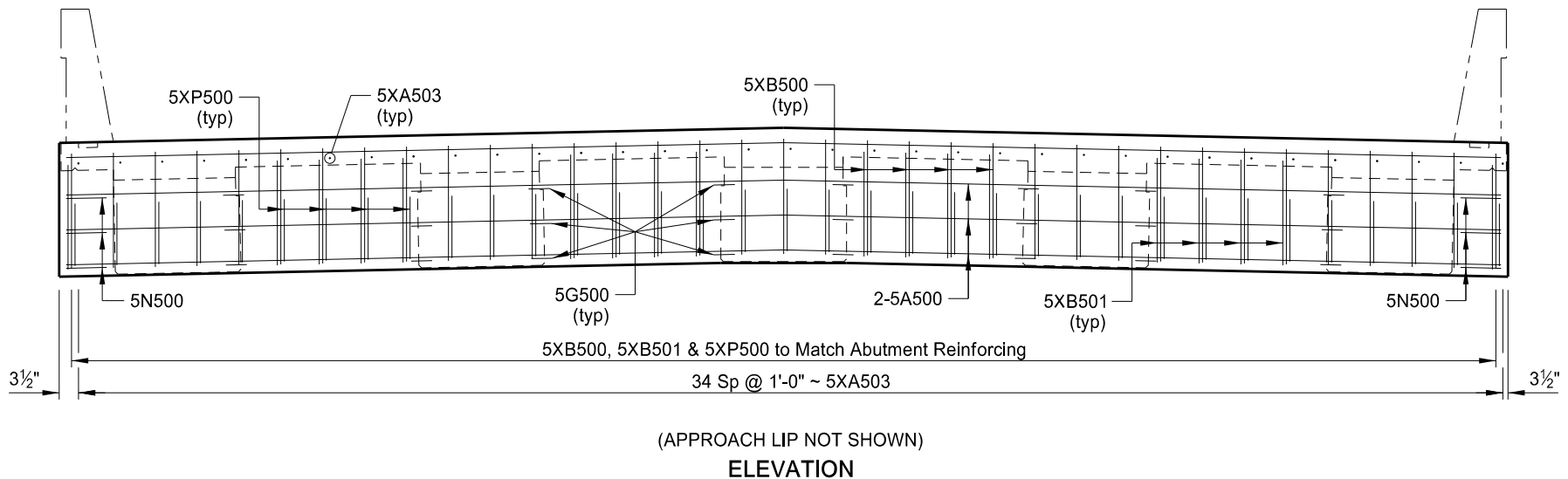
STATE	PROJECT NUMBER	SECTION NO.	SHEET NO.
ND	BRO-8-010(036)009	170	50



\* Use mechanical connectors for the couplers capable of developing 125% of the reinforcing steel specified yield strength. Provide epoxy coated couplers according to Section 836.02 A and repair any damaged epoxy coating according to Section 612.04 E.

**NOTE:**

Do not install the 5XA503 bars into the approach slab until all of the foundation fill is in place.



This drawing is preliminary and not for construction or implementation purposes.

<b>QUANTITIES</b>
SEE DWG 10-009.014-15
MAPLE RIVER
ENDWALL DETAILS