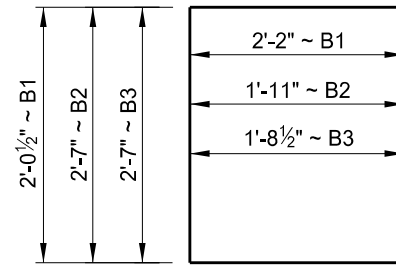


STATE	PROJECT NUMBER	SECTION NO.	SHEET NO.
ND	BRO-8-010(036)009	170	47

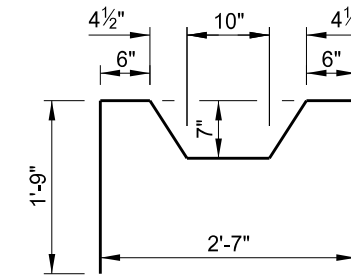
NOTES:

Select the final prestress force (remaining after all losses have been accounted for) and its corresponding center of gravity from those on a curve determined by the three values shown in the "Prestressing Data" table.

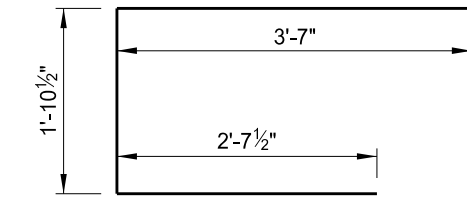
Minor changes to the shape of the beam and to reinforcing steel may be made to accommodate the forms of various contractors and their construction methods with the approval of the Engineer.



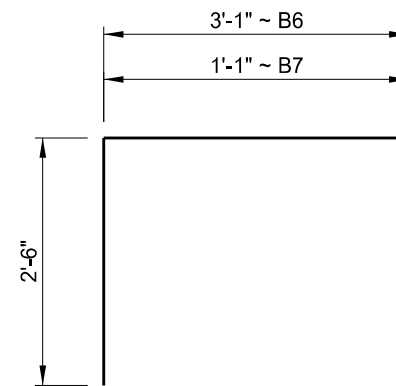
B1, B2 & B3



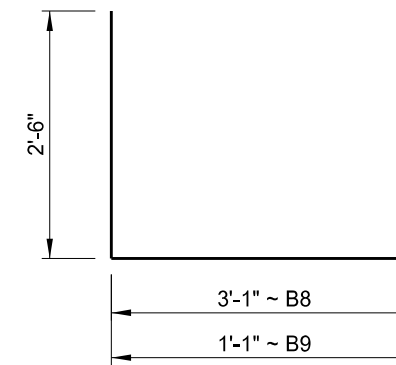
B4



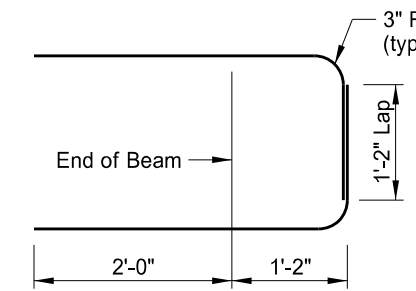
B5



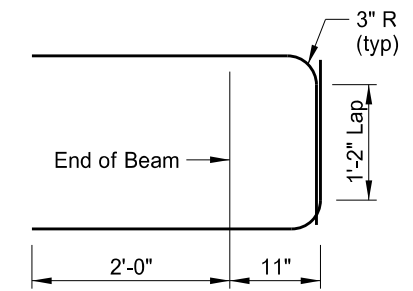
B6 & B7



B8 & B9



(AT ABUTMENTS)

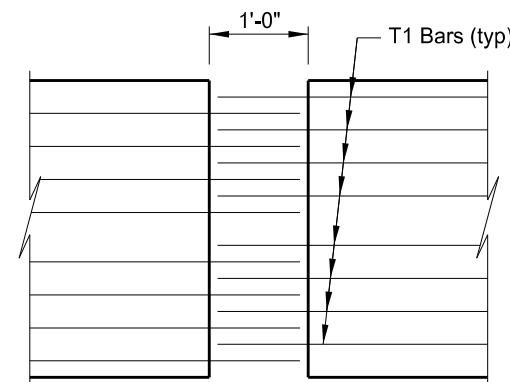


(AT PIERS)

T1

(DIMENSIONS SHOWN ARE OUT TO OUT)

BENT BAR DETAILS



BEAM END PLAN AT PIER

This drawing is preliminary and not for construction or implementation purposes.

PRESTRESSING DATA					
C.G.	FINAL FORCE	DETENSION STRENGTH	ACCEPTANCE STRENGTH	WEIGHT (TONS)	BEAM LENGTH
2.75"	1113.0 k	7,500 psi (Min)	7,500 psi (Min)	22.1	79'-0"
2.94"	1125.9 k				
3.25"	1147.6 k				

MAPLE RIVER

PRE-TENSIONED 27" x 36"
PRESTRESSED SPREAD BOX BEAM