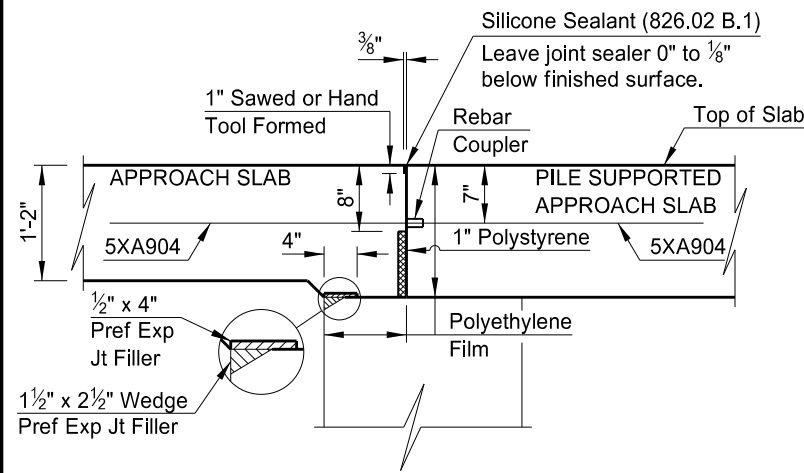
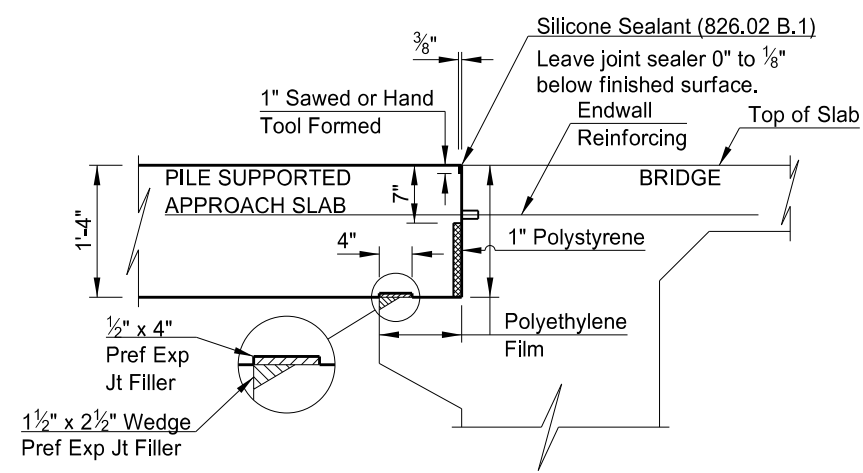


STATE	PROJECT NUMBER	SECTION NO.	SHEET NO.
ND	IM-8-094(100)337	170	36



APPROACH SLAB JOINT DETAIL B



APPROACH SLAB JOINT DETAIL C

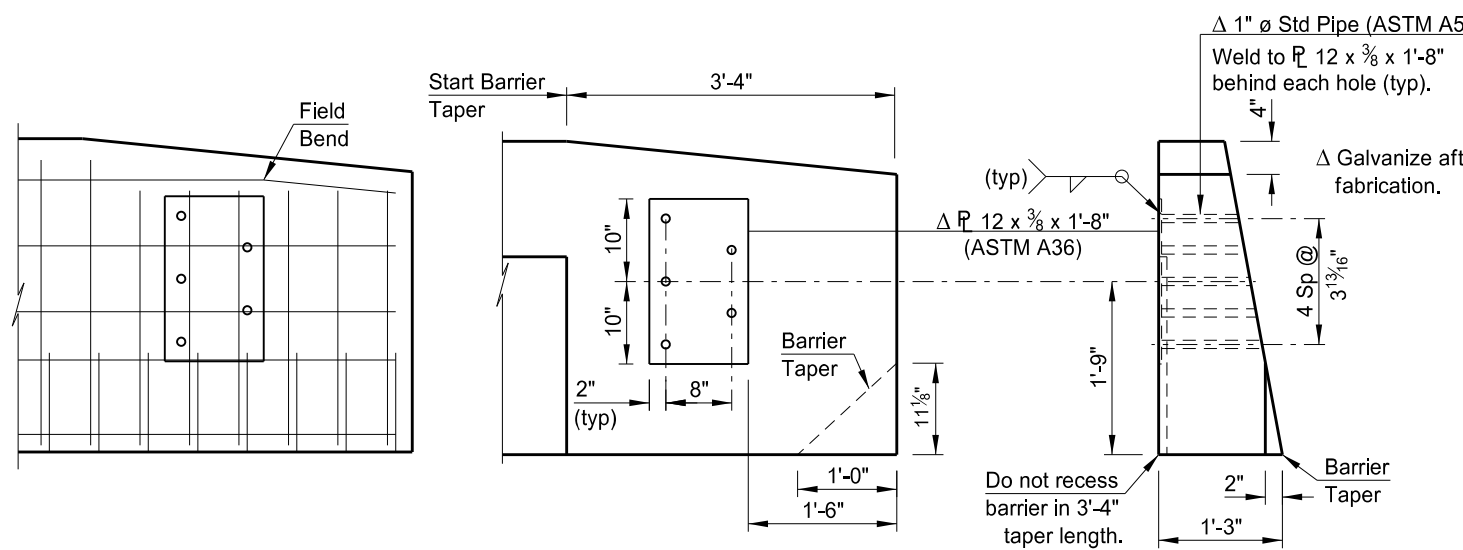
NOTES:

The estimated material quantities shown are for information purposes only. Include the concrete, reinforcing bars, polyethylene film, preformed joint filler, polystyrene, silicone sealant, connection plates and pipes, and labor required to build the approach slabs and barriers in the pay item "Pile Supported Approach Slab." Use Class AE-3 concrete and Grade 60 reinforcing steel. Provide reinforcing steel that meets the requirements of Section 612. Use polyethylene film that meets the requirements of ASTM C171.

The bar marks beginning with an "X" indicate an epoxy coated bar. The dimensions shown in the "Bent Bar Details" are out to out.

SKEW ANGLE = 0°

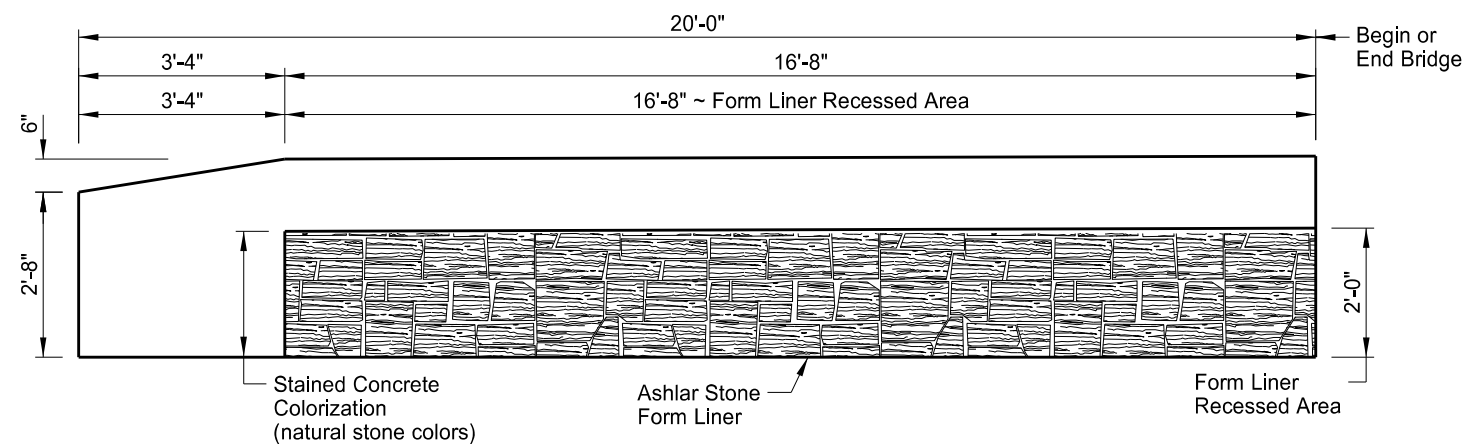
BAR LIST - ONE SLAB			
SIZE	MARK	NO.	LENGTH
7	A900	8	42'-2"
4	A901	6	42'-2"
5	SN900	1	228'-5"
5	SN901	1	193'-7"
8	XA900	85	19'-8"
5	XA901	43	19'-8"
5	XA902	42	42'-2"
5	XA903	42	41'-0"
5	XA904	41	6'-0"
7	XA905	164	19'-8"
5	XA906	43	3'-0"
4	XA907	18	19'-8"
4	XA908	24	1'-2"
4	XA909	2	11'-7"
5	XB900	43	3'-6"
5	XK900	66	5'-7"
5	XL900	66	5'-11"
5	XL901	14	5'-3"



SHOWING REINFORCING

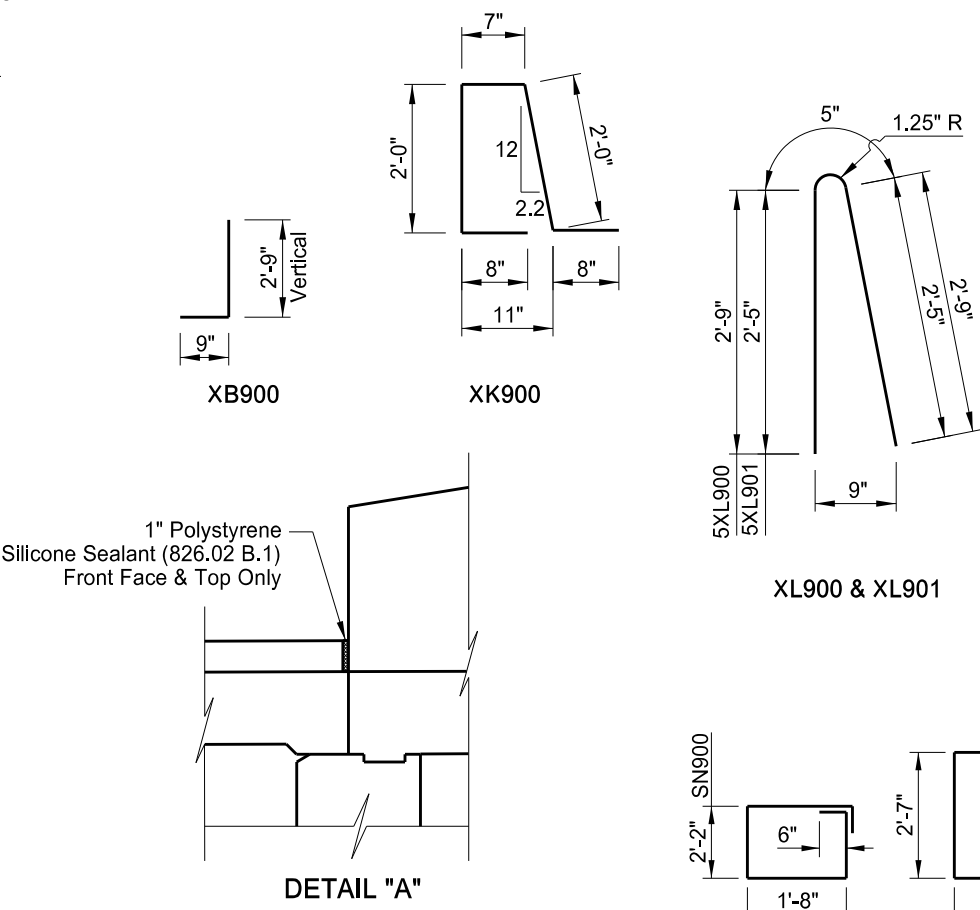
SHOWING DIMENSIONS

(SHOWING BACK FACE)
CONNECTION PLATE DETAILS

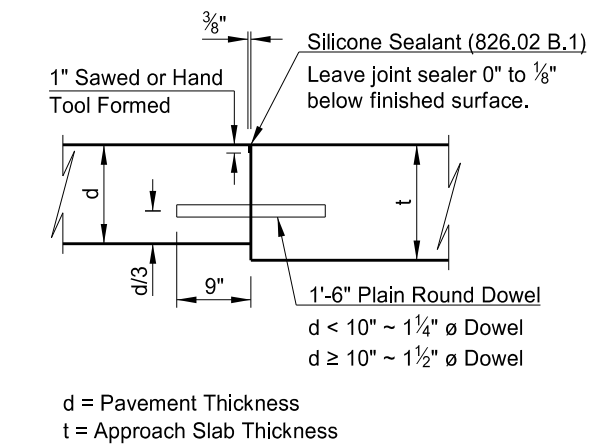


(SHOWING FORM LINER ~ BACK FACE)
BARRIER ELEVATION

NOTE:
See "A-A" Dwg 94-337.331R-15 for Form Liner Limits.



DETAIL "A"

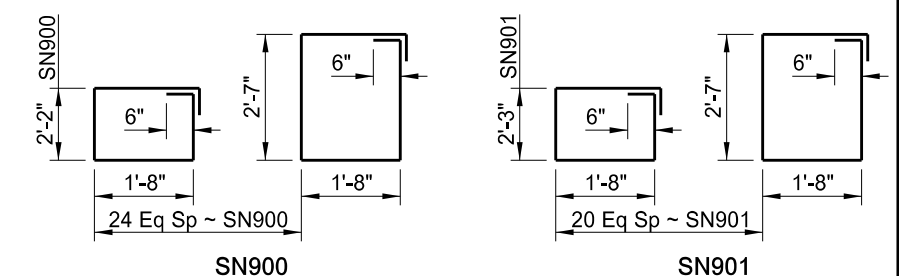


JOINT DETAIL A

d = Pavement Thickness
t = Approach Slab Thickness

This drawing is preliminary and not for construction or implementation purposes.

ESTIMATED MATERIAL QUANTITIES	
REINFORCING STEEL (LBS)	CONCRETE (CY)
18,567	97.4



BENT BAR DETAILS

QUANTITIES	(ONE END)
APPROACH SLAB	91.9 SY
PILE SUPPORTED APPROACH SLAB	94.4 SY

MAPLE RIVER

APPROACH SLAB DETAILS