

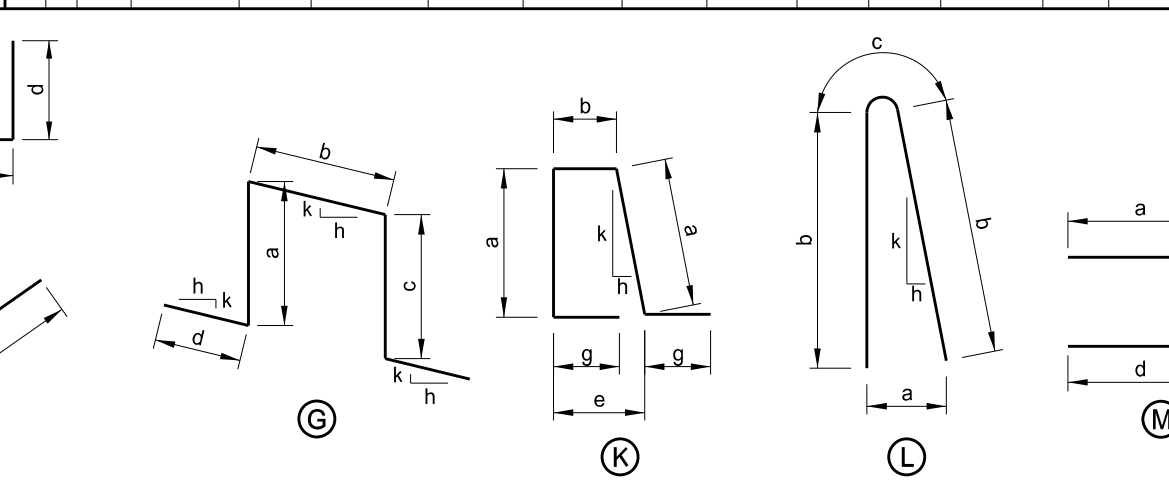
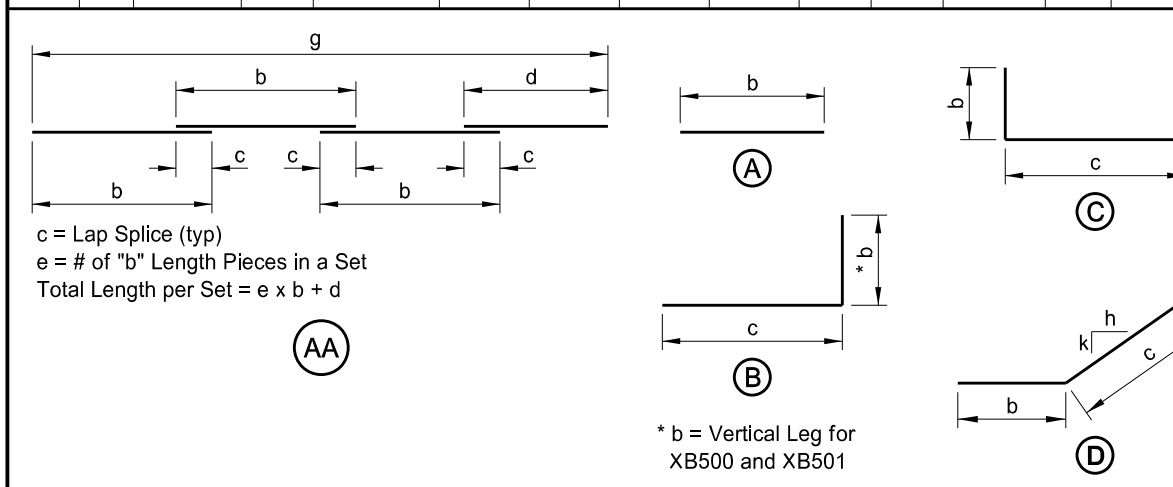
BILL OF REINFORCING STEEL, GRADE 60

LETTER PREFIX OF BAR MARK DENOTES SHAPE ~ SEE BAR DETAILS

STATE	PROJECT NUMBER	SECTION NO.	SHEET NO.
ND	IM-8-094(100)337	170	34

LOCATION	SIZE	MARK	NO. EACH /SET	NOMINAL LENGTH	DETAILING DIMENSIONS																		
					a	b	c	d	e	f	g	h	k										
ABUTMENTS	5	A100	12	46'-3"		46'-3"																	
	5	B100	20	20'-1"		3'-6"	16'-7"																
	5	B101	16	6'-6"		2'-3"	4'-3"																
	6	B102	20	17'-7"		1'-0"	16'-7"																
	6	B103	20	9'-0"		1'-0"	8'-0"																
	5	C100	12	50'-9"		2'-3"	46'-3"	2'-3"															
	5	C101	24	17'-2"		7'-9"	1'-8"	7'-9"															
	5	C102	18	14'-1"		4'-8"	1'-8"	7'-9"															
	5	C103	42	4'-2"		1'-3"	1'-8"	1'-3"															
	4	C104	72	2'-8"		6"	1'-8"	6"															
	5	C105	20	18'-0"		8'-2"	1'-8"	8'-2"															
	6	C106	60	16'-8"		7'-6"	1'-8"	7'-6"															
	6	C107	24	13'-8"		4'-6"	1'-8"	7'-6"															
	5	D100	8	16'-0"		2'-6"	13'-6"														12	3.7	
	5	SB100	4	52'-6"	4'-3"	4'-0"	4'-3"	13'-9"	3														
	6	SB101	4	39'-6"	1'-0"	4'-0"	1'-0"	13'-9"	3														
	5	SC100	4	178'-9"	1'-8"	4'-2"	7'-11"	1'-8"	12														

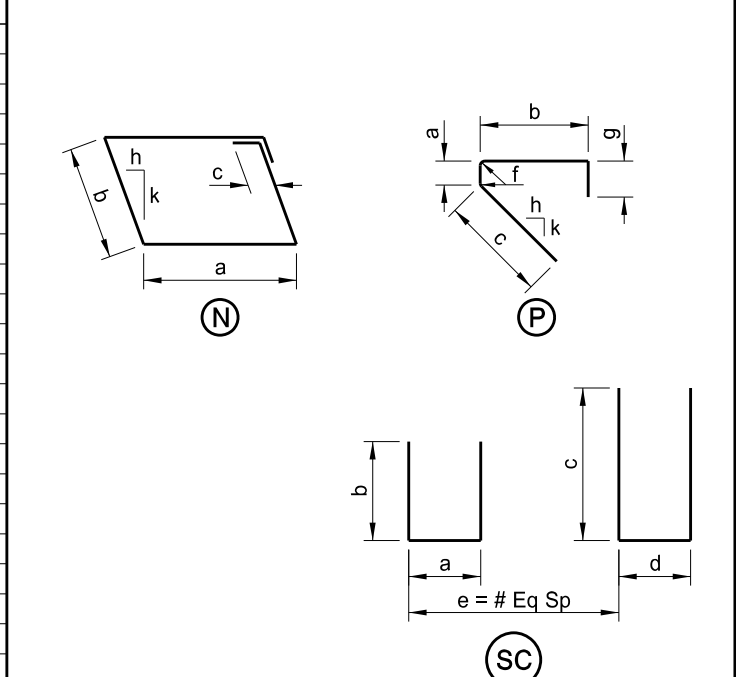
LOCATION	SIZE	MARK	NO. EACH /SET	NOMINAL LENGTH	DETAILING DIMENSIONS																		
					a	b	c	d	e	f	g	h	k										
REGULAR	5	A500	12	42'-3"		42'-3"																	
	6	A501	12	38'-3"		38'-3"																	
	4	A502	48	5'-7"		5'-7"																	
	5	G500	24	9'-7"	1'-6"	5'-7"	1'-6"	6"													12	0	
	5	N500	12	7'-2"	1'-7"	1'-6"	6"														0	12	
	5	XA500	871	42'-2"		42'-2"																	
	5	XA501	68	10'-0"		10'-0"																	
	6	XA502	80	46'-0"		46'-0"																	
	6	XA503	80	22'-0"		22'-0"																	
	5	XA504	8	42'-3"		42'-3"																	
5	XA505	172	3'-0"		3'-0"																		
EPOXY	5	XB500	86	7'-3"		3'-3"	4'-0"																
	5	XB501	56	6'-0"		3'-0"	3'-0"																
	4	XG500	48	9'-10"	3'-1"	1'-8"	3'-1"	1'-0"													12	0	
	5	XK500	754	4'-11"	1'-6"	7"								10"							8"	2.2	12
	5	XL500	754	5'-11"	9"	2'-9"	5"							1.25"							2.2	12	
	5	XP500	86	5'-6"	5"	2'-1"	2'-2"							1.25"	10"						12	6.5	
	5	XAA500	34	253'-8"		60'-0"	3'-0"	13'-8"	4					241'-8"									
	5	XAA501	35	251'-8"		60'-0"	2'-6"	11'-8"	4					241'-8"									
	4	XAA502	18	251'-8"		60'-0"	2'-6"	11'-8"	4					241'-8"									



23 U.S.C. 409
NDDOT Reserves All Objections

NOTES:

- All dimensions are out to out of bars.
- Nominal length of each bent bar or cut bar is the sum total of the detailing dimensions for that bar, unless otherwise noted.
- Turn adjacent "AA" bars end for end so that the splice locations are staggered.
- The "f" dimension indicates the inside radius unless otherwise noted.
- An "X" preceding a bar designation indicates an epoxy coated bar.



This drawing is preliminary and not for construction or implementation purposes.

PRELIMINARY

MAPLE RIVER

REINFORCING BAR LIST & DETAILS