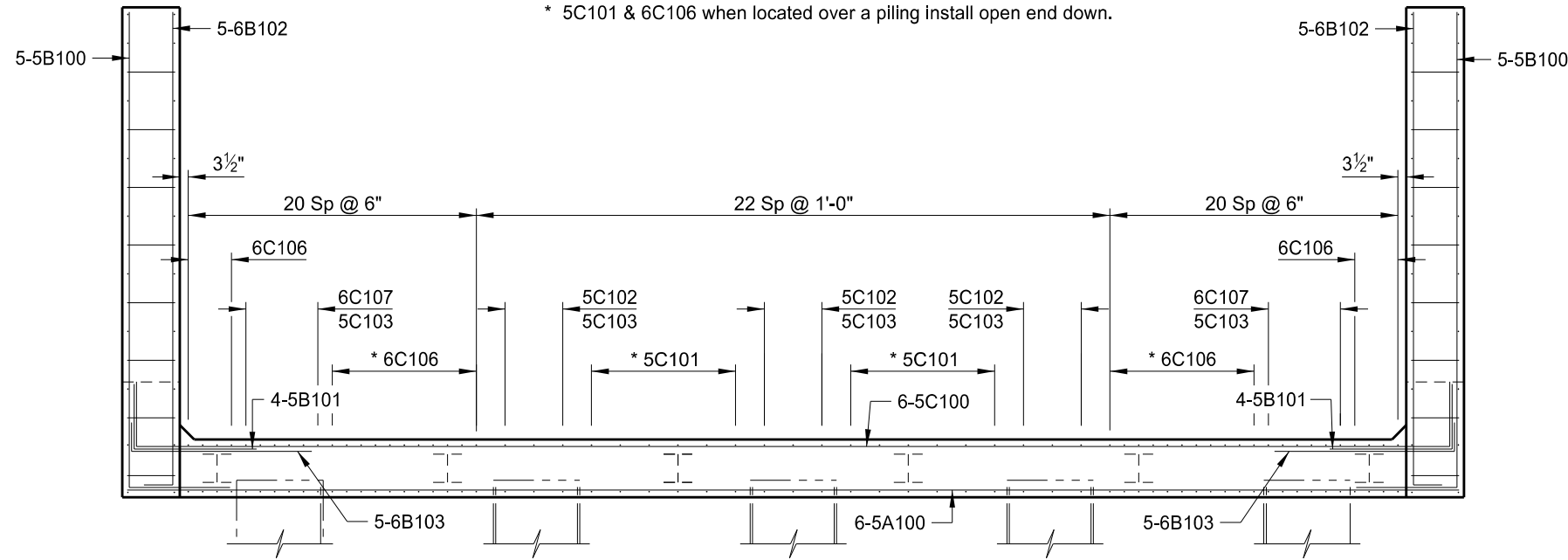
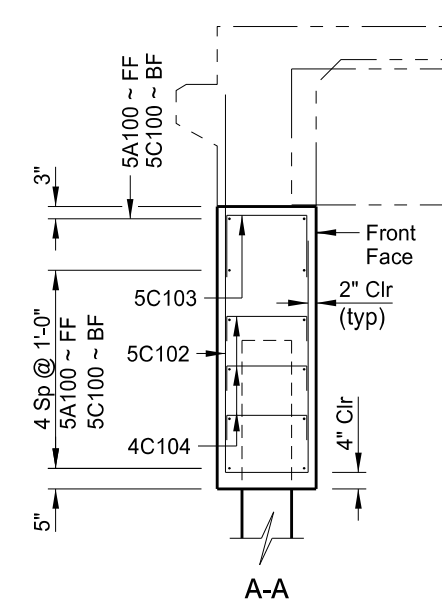


STATE	PROJECT NUMBER	SECTION NO.	SHEET NO.
ND	IM-8-094(100)337	170	25

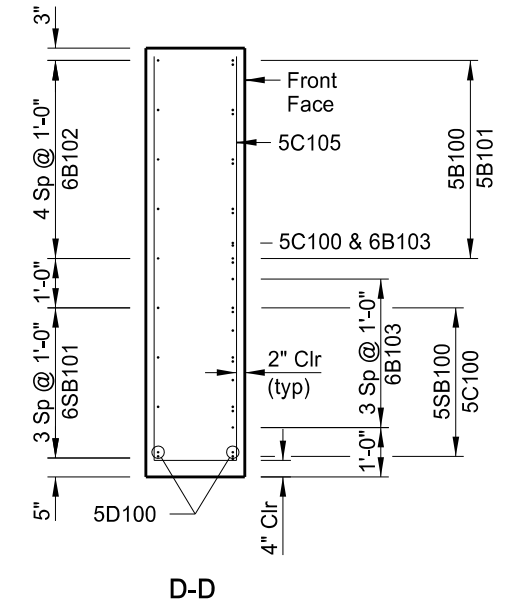
**NOTE:**  
Position the long leg of 5B102 bar perpendicular to abutment wing.  
\* 5C101 & 6C106 when located over a piling install open end down.



PLAN



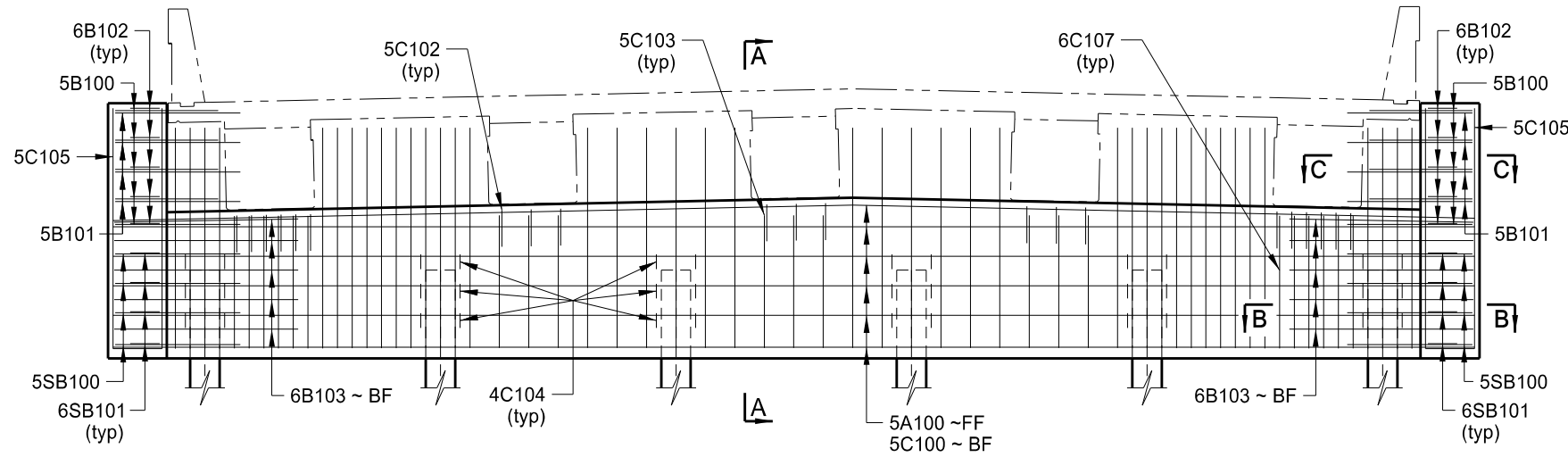
A-A



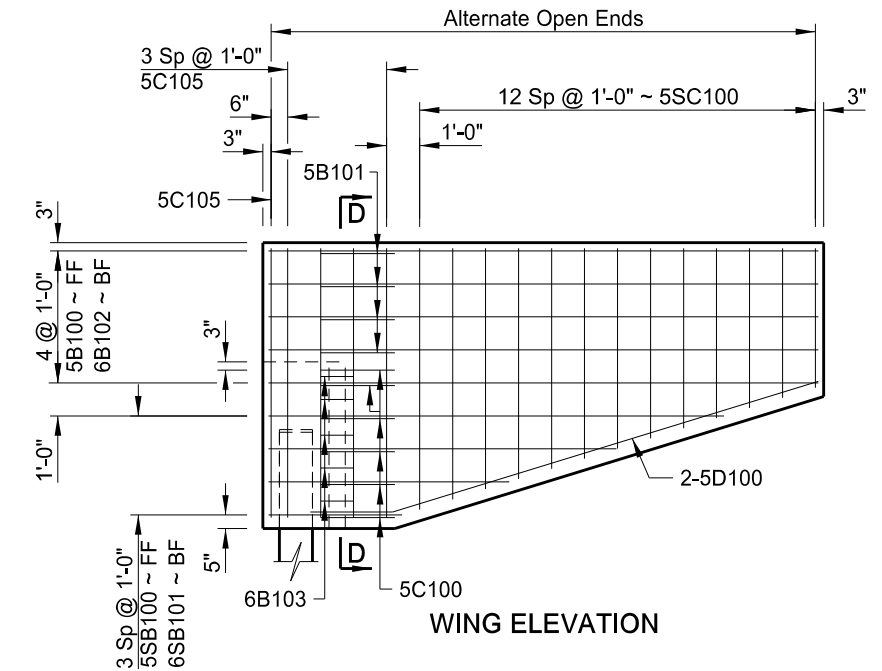
D-D

**NOMENCLATURE:**

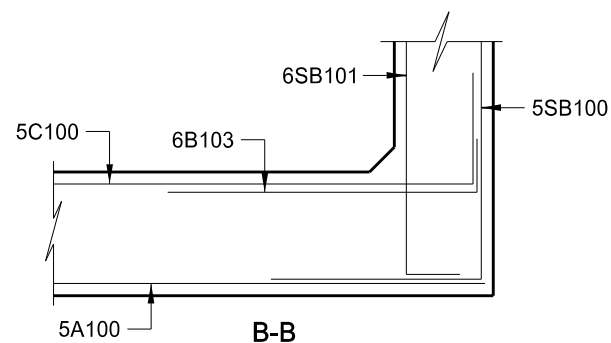
FF = Front Face  
BF = Back Face



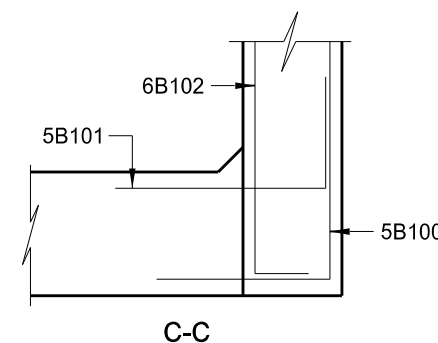
ELEVATION



WING ELEVATION



B-B



C-C

This drawing is preliminary and not for construction or implementation purposes.

QUANTITIES	(ONE ABUTMENT)
CLASS AE-3 CONCRETE	34.5 CY
REINFORCING STEEL	3,625 LBS
MAPLE RIVER (SHOWING REINFORCING) ABUTMENT DETAILS	